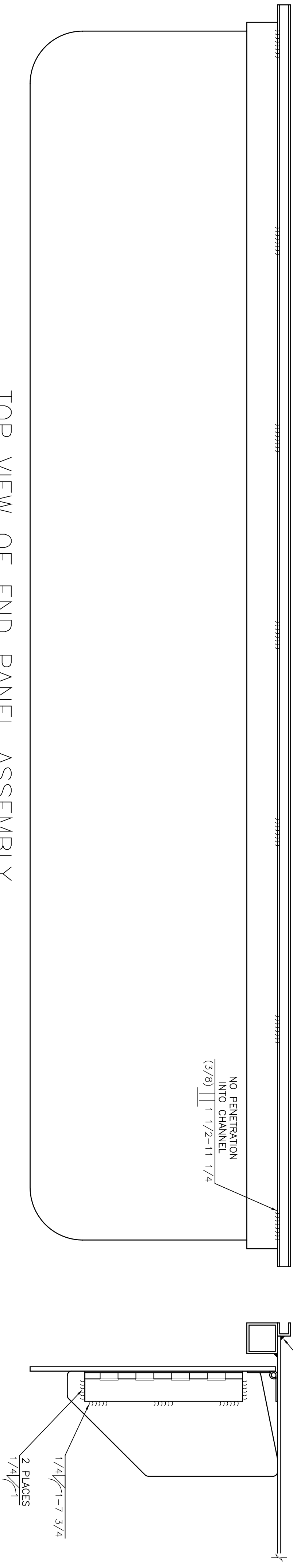
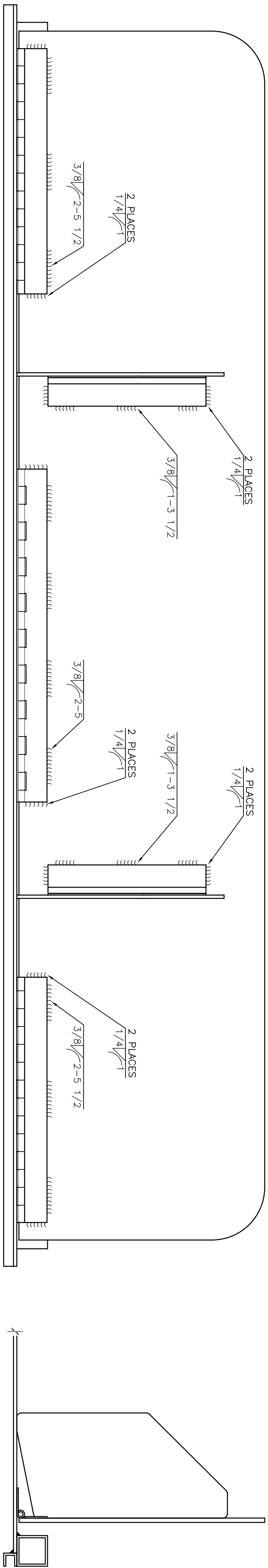


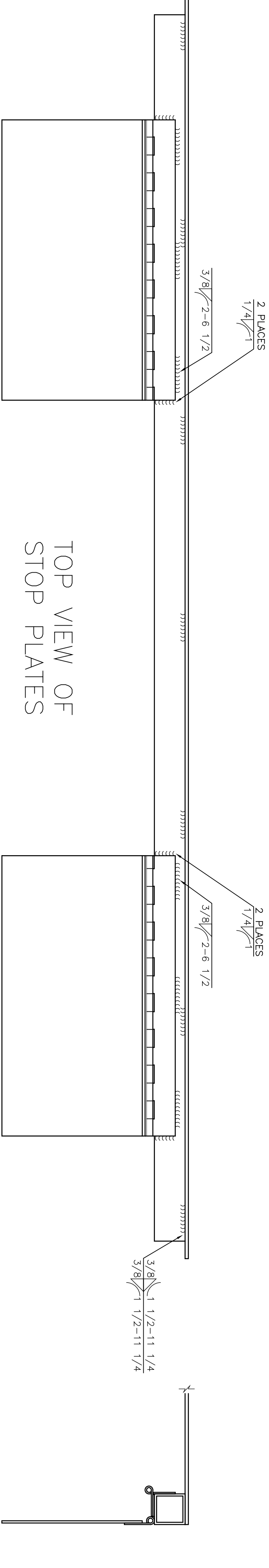
REVISIONS			
ZONE	REV	DESCRIPTION	DATE
-	-	-	-



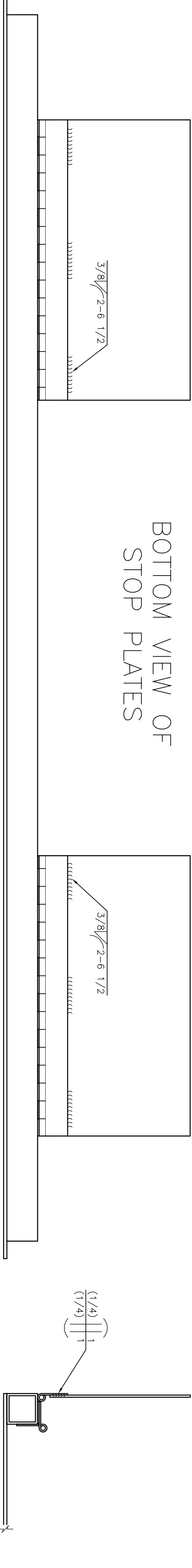
TOP VIEW OF END PANEL ASSEMBLY



BOTTOM VIEW OF SHELF



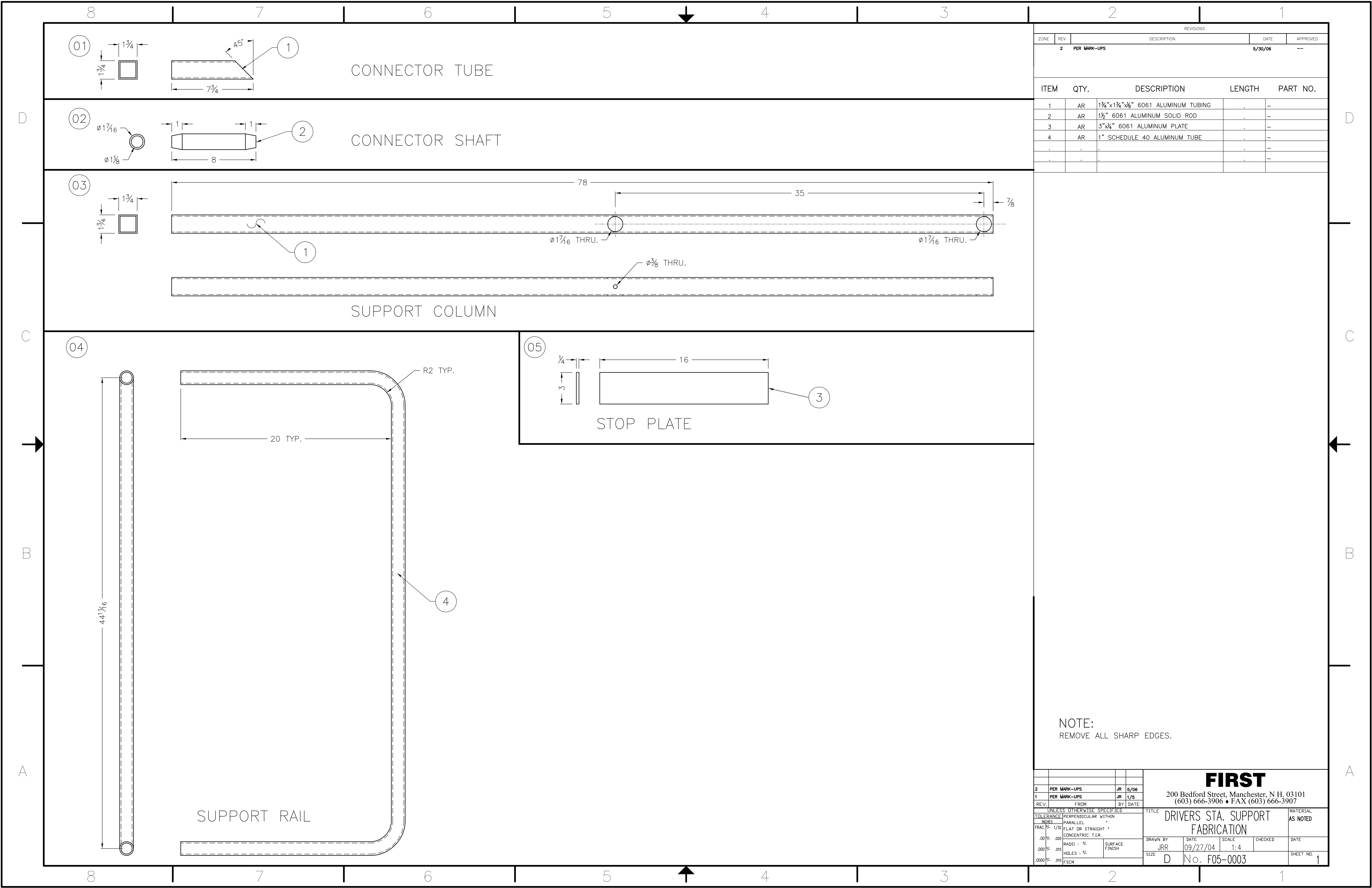
TOP VIEW OF STOP PLATES



BOTTOM VIEW OF STOP PLATES

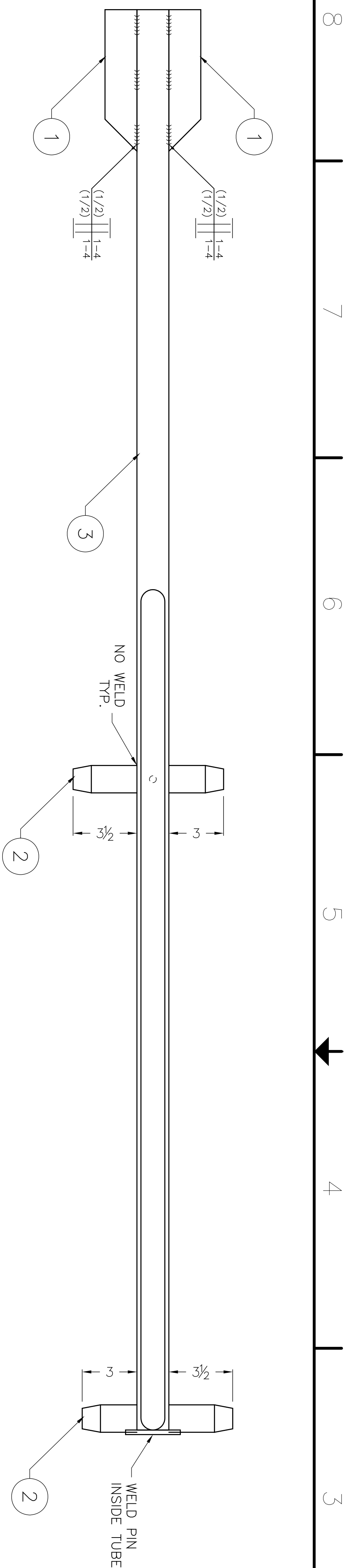
NOTE:
PARTS PLACEMENT AS DIMENSIONED.
PARTS NOT DIMENSIONED TO BE CENTERED AS SHOWN.

FIRST		200 Bedford Street, Manchester, N.H. 03101 (603) 666-3906 • FAX (603) 666-3907	
REV	DESCRIPTION	DATE	BY
1	END PANEL ASSEMBLY	09/27/04	JR2D2
2	WELD DETAILS	09/27/04	JR2D2
3			
4			
5			
6			
7			
8			
9			
10			
11			
12			
13			
14			
15			
16			
17			
18			
19			
20			
21			
22			
23			
24			
25			
26			
27			
28			
29			
30			
31			
32			
33			
34			
35			
36			
37			
38			
39			
40			
41			
42			
43			
44			
45			
46			
47			
48			
49			
50			
51			
52			
53			
54			
55			
56			
57			
58			
59			
60			
61			
62			
63			
64			
65			
66			
67			
68			
69			
70			
71			
72			
73			
74			
75			
76			
77			
78			
79			
80			
81			
82			
83			
84			
85			
86			
87			
88			
89			
90			
91			
92			
93			
94			
95			
96			
97			
98			
99			
100			
101			
102			
103			
104			
105			
106			
107			
108			
109			
110			
111			
112			
113			
114			
115			
116			
117			
118			
119			
120			
121			
122			
123			
124			
125			
126			
127			
128			
129			
130			
131			
132			
133			
134			
135			
136			
137			
138			
139			
140			
141			
142			
143			
144			
145			
146			
147			
148			
149			
150			
151			
152			
153			
154			
155			
156			
157			
158			
159			
160			
161			
162			
163			
164			
165			
166			
167			
168			
169			
170			
171			
172			
173			
174			
175			
176			
177			
178			
179			
180			
181			
182			
183			
184			
185			
186			
187			
188			
189			
190			
191			
192			
193			
194			
195			
196			
197			
198			
199			
200			
201			
202			
203			
204			
205			
206			
207			
208			
209			
210			
211			
212			
213			
214			
215			
216			
217			
218			
219			
220			
221			
222			
223			
224			
225			
226			
227			
228			
229			
230			
231			
232			
233			
234			
235			
236			
237			
238			
239			
240			
241			
242			
243			
244			
245			
246			
247			
248			
249			
250			
251			
252			
253			
254			
255			
256			
257			
258			
259			
260			
261			
262			
263			
264			
265			
266			
267			
268			
269			
270			
271			
272			
273			
274			
275			
276			
277			
278			
279			
280			
281			
282			
283			
284			
285			
286			
287			
288			
289			
290			
291			
292			
293			
294			
295			
296			
297			
298			
299			
300			
301			
302			
303			
304			
305			
306			
307			
308			
309			
310			
311			
312			
313			
314			
315			
316			
317			
318			
319			
320			
321			
322			
323			
324			
325			
326			
327			
328			
329			
330			
331			
332			
333			
334			
335			
336			
337			
338			
339			
340			
341			
342			
343			
344			
345			
346			
347			
348			
349			
350			
351			
352			
353			
354			
355			
356			
357			
358			
359			
360			
361			
362			
363			
364			
365			
366			
367			
368			
369			
370			
371			
372			
373			
374			
375			
376			
377			
378			
379			
380			
381			
382			
383			
384			
385			
386			
387			
388			
389			
390			
391			
392			
393			
394			
395			
396			
397			
398			
399			
400			
401			
402			
403			
404			
405			
406			
407			
408			
409			
410			
411			
412			
413			
414			
415			
416			
417			
418			
419			
420			
421			
422			
423			
424			
425			
426			
427			
428			
429			
430			
431			
432			
433			
434			
435			
436			
437			
438			
439			
440			
441			
442			
443			
444			
445			
446			
447			
448			
449			
450			
451			
452			
453			
454			
455			
456			
457			
458			
459			
460			
461			
462			
463			
464			
465			
466			
467			
468			



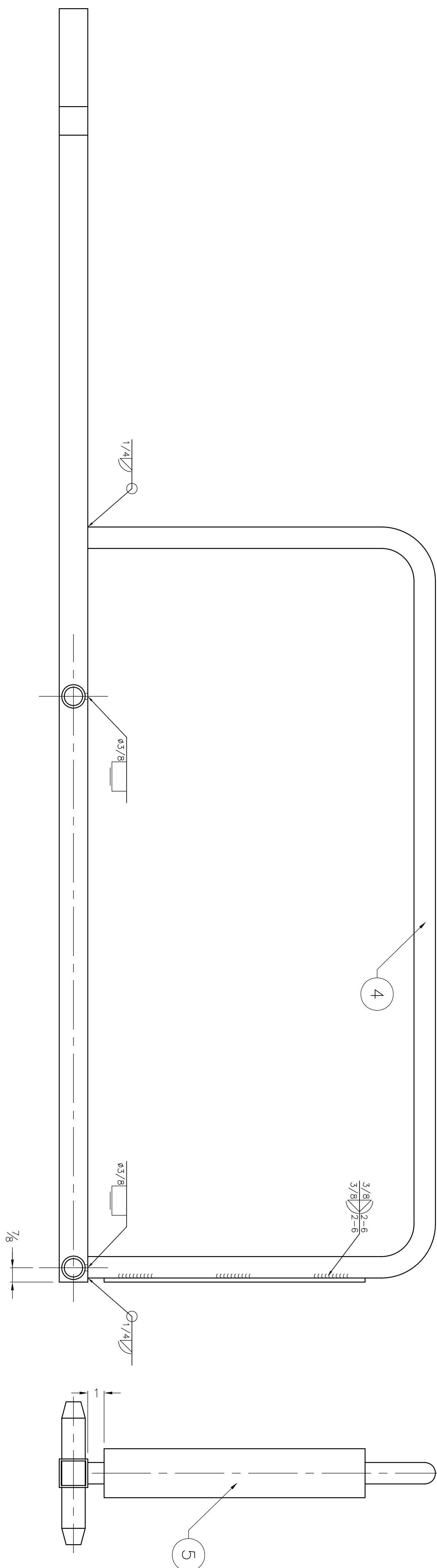
REVISIONS				
ZONE	REV	DESCRIPTION	DATE	APPROVED
2	PER MARK-UPS		5/30/06	--
ITEM	QTY.	DESCRIPTION	LENGTH	PART NO.
1	AR	1 3/4"x1 3/4"x1/8" 6061 ALUMINUM TUBING	.	--
2	AR	1 1/2" 6061 ALUMINUM SOLID ROD	.	--
3	AR	3"x1/4" 6061 ALUMINUM PLATE	.	--
4	AR	1" SCHEDULE 40 ALUMINUM TUBE	.	--
.	.	.	.	--
.	.	.	.	--

NOTE:
REMOVE ALL SHARP EDGES.

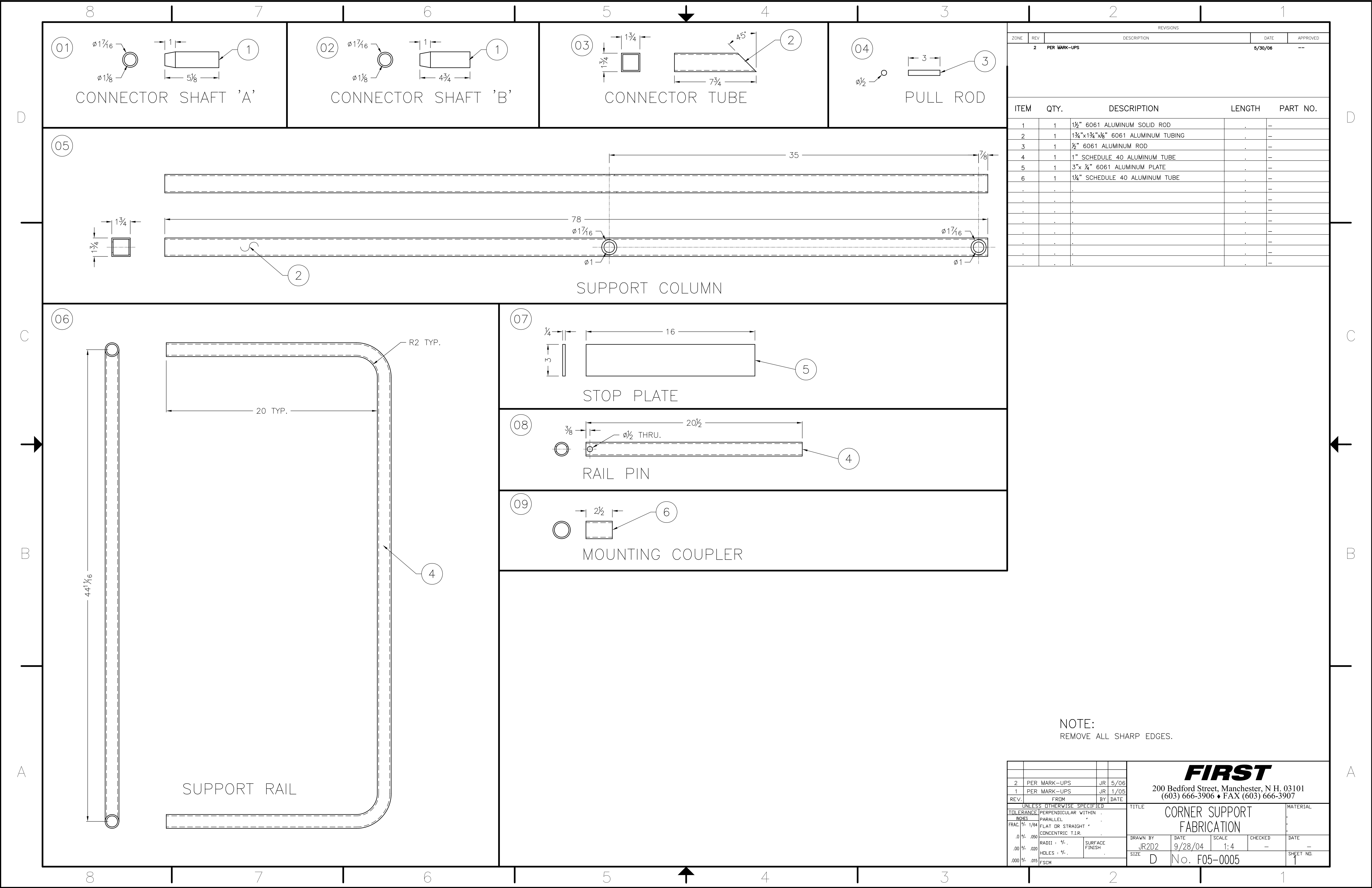


REVISIONS				
ZONE	REV	DESCRIPTION	DATE	APPROVED
	2	PER MAKE-UPS	6/30/06	--

ITEM	QTY.	DESCRIPTION	LENGTH	PART NO.
1	2	CONNECTOR TUBE	.	F05-0003-01
2	2	CONNECTOR SHAFT	.	F05-0003-02
3	1	SUPPORT COLUMN	.	F05-0003-03
4	1	SUPPORT RAIL	.	F05-0003-04
5	1	STOP PLATE	.	F05-0003-05
.	.	.	.	--
.	.	.	.	--

[illegible]

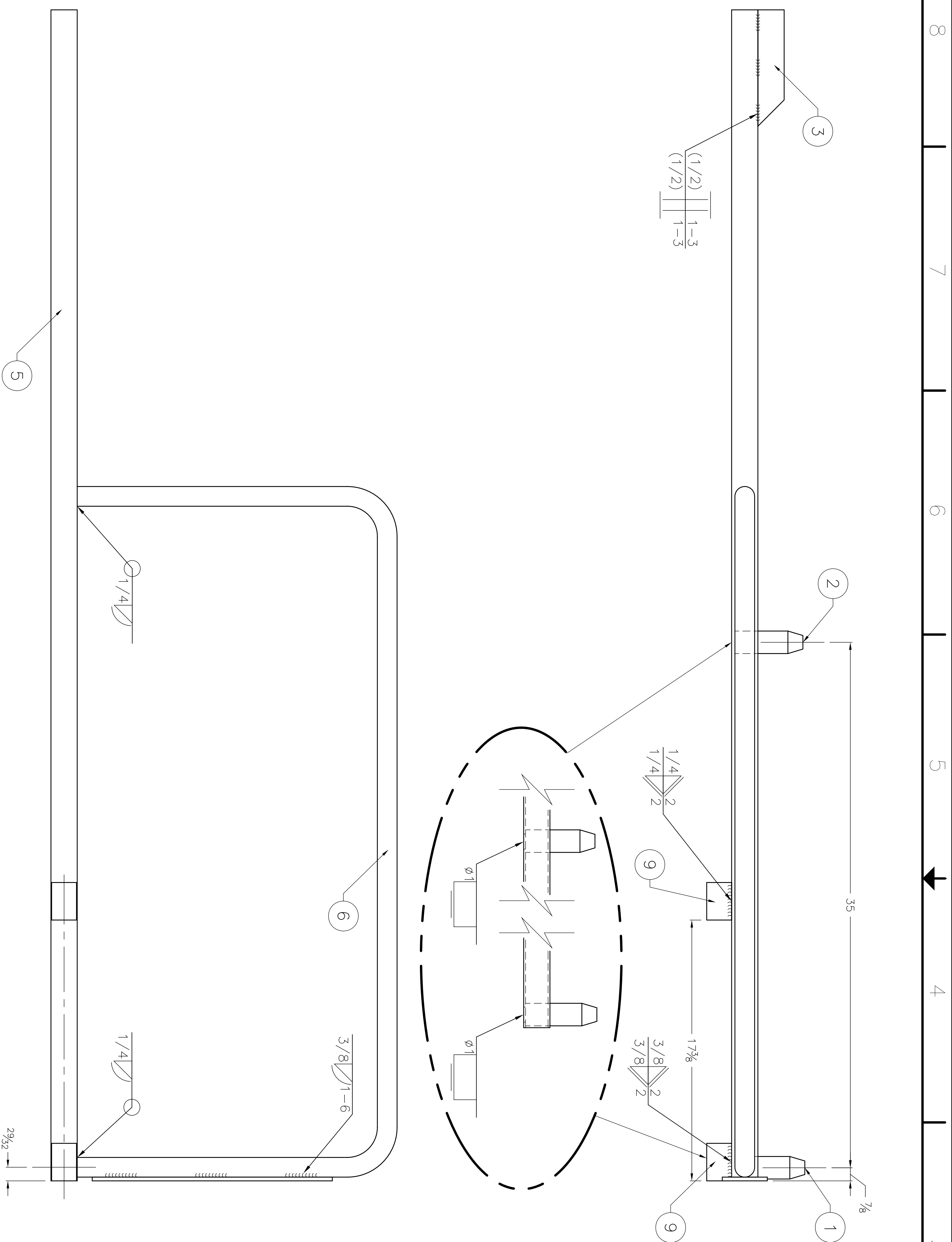
NOTE:
REMOVE ALL SHARP EDGES.



NOTE:
REMOVE ALL SHARP EDGES.

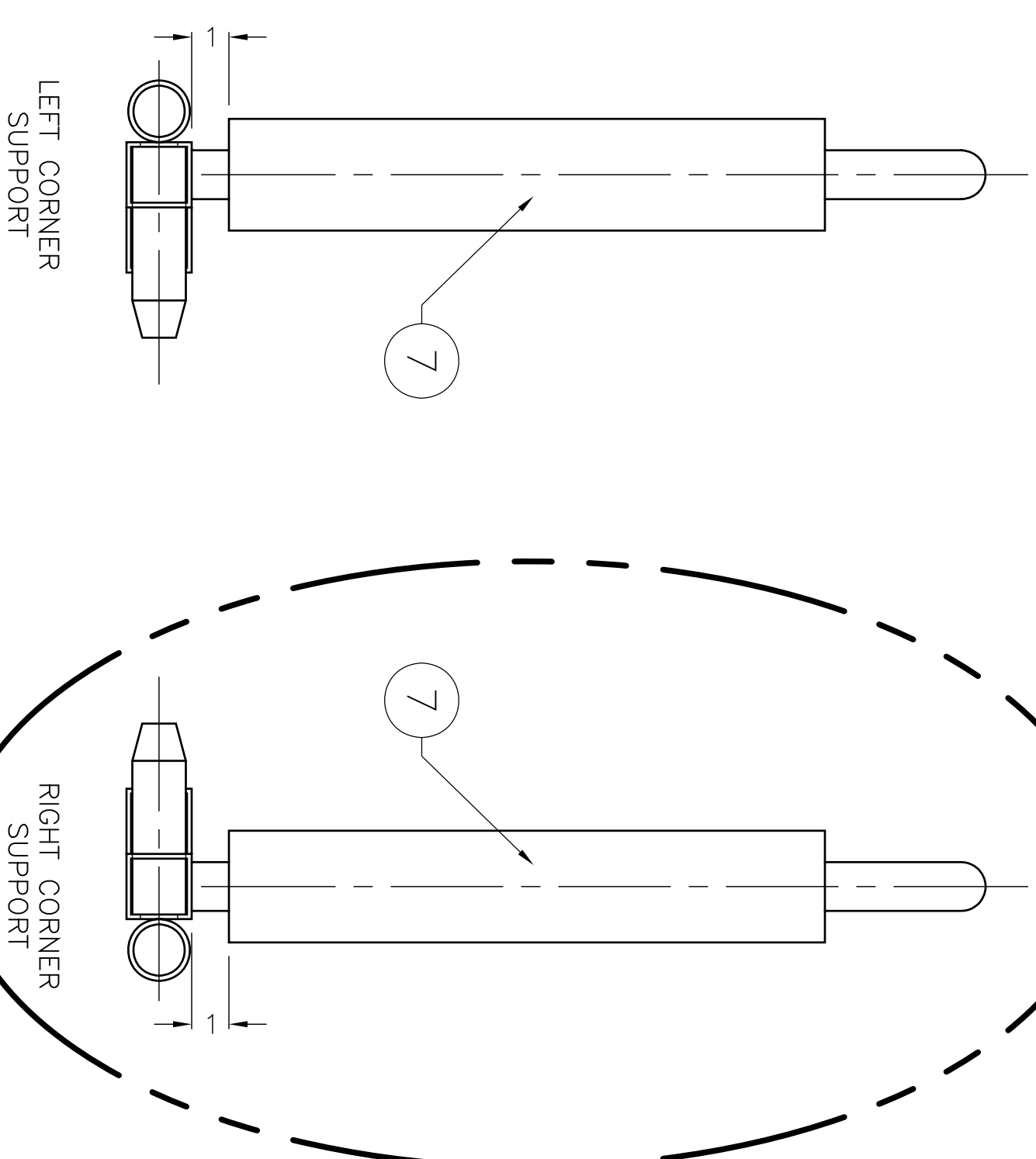
2		PER MARK-UPS		JR	5/06
1		PER MARK-UPS		JR	1/05
REV.		FROM		BY DATE	
UNLESS OTHERWISE SPECIFIED					
TOLERANCE		PERPENDICULAR WITHIN		TITLE	
INCHES		PARALLEL		CORNER SUPPORT FABRICATION	
FRAC. 1/64		FLAT OR STRAIGHT		MATERIAL	
.0		CONCENTRIC T.I.R.		.	
.00		RADIUS 1/2		.	
.000		HOLES 1/2		.	
FSCM		SURFACE FINISH		.	
DRAWN BY		DATE		SCALE	
JR2D2		9/28/04		1:4	
SIZE		D		No. F05-0005	
CHECKED		DATE		SHEET NO.	
-		-		1	

FIRST
200 Bedford Street, Manchester, N.H. 03101
(603) 666-3906 • FAX (603) 666-3907



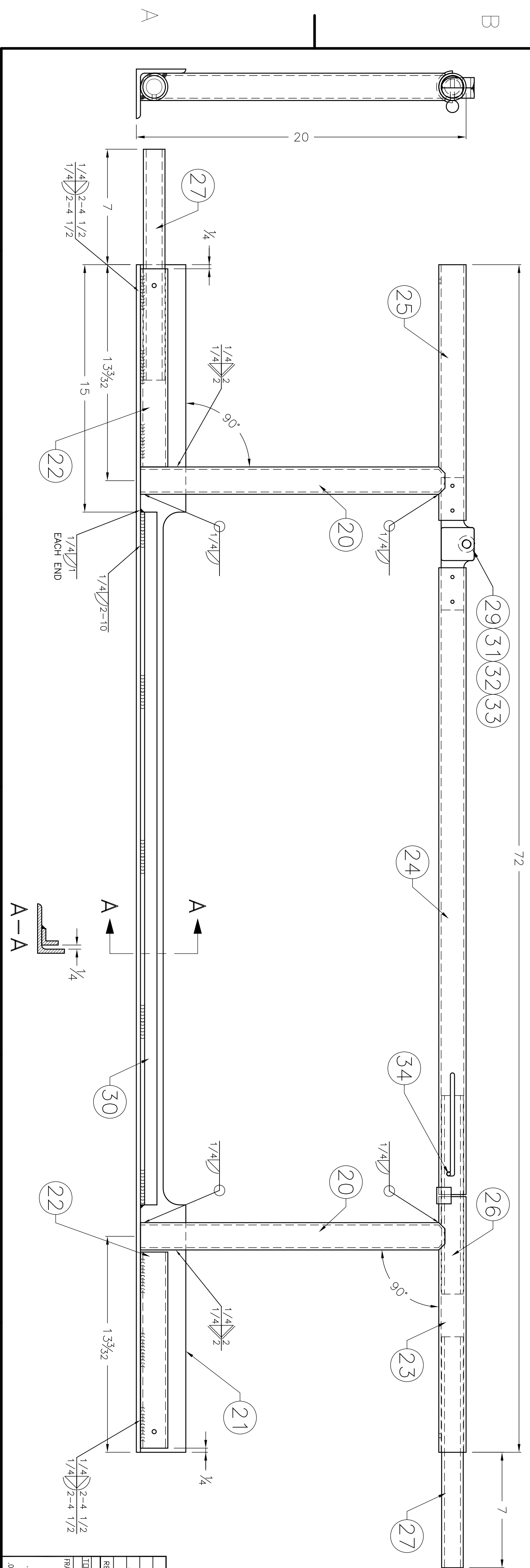
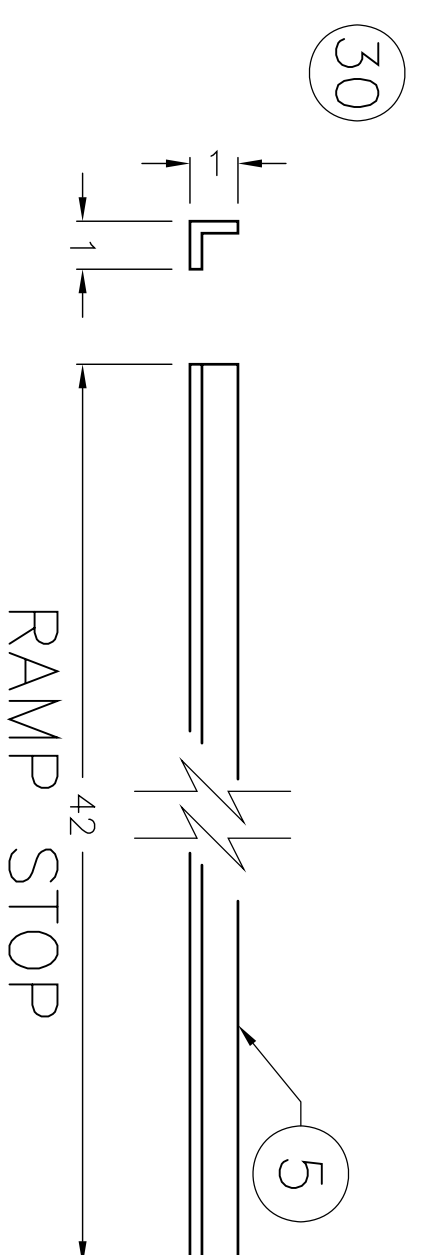
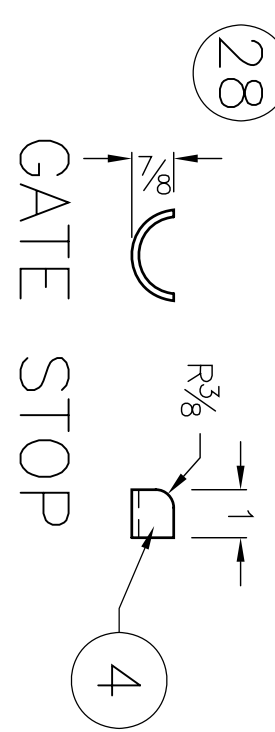
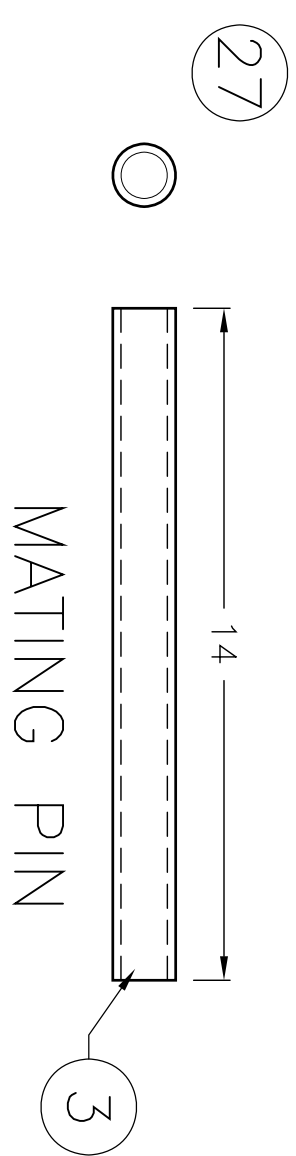
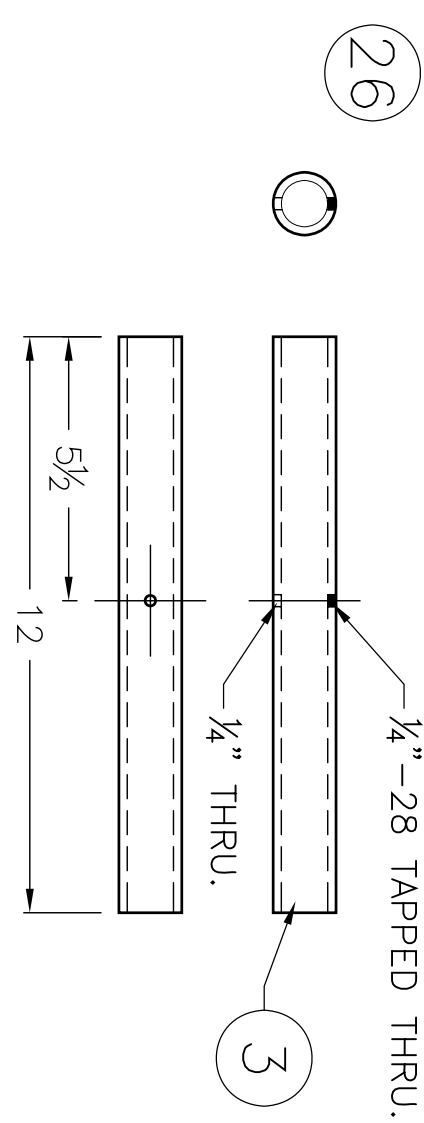
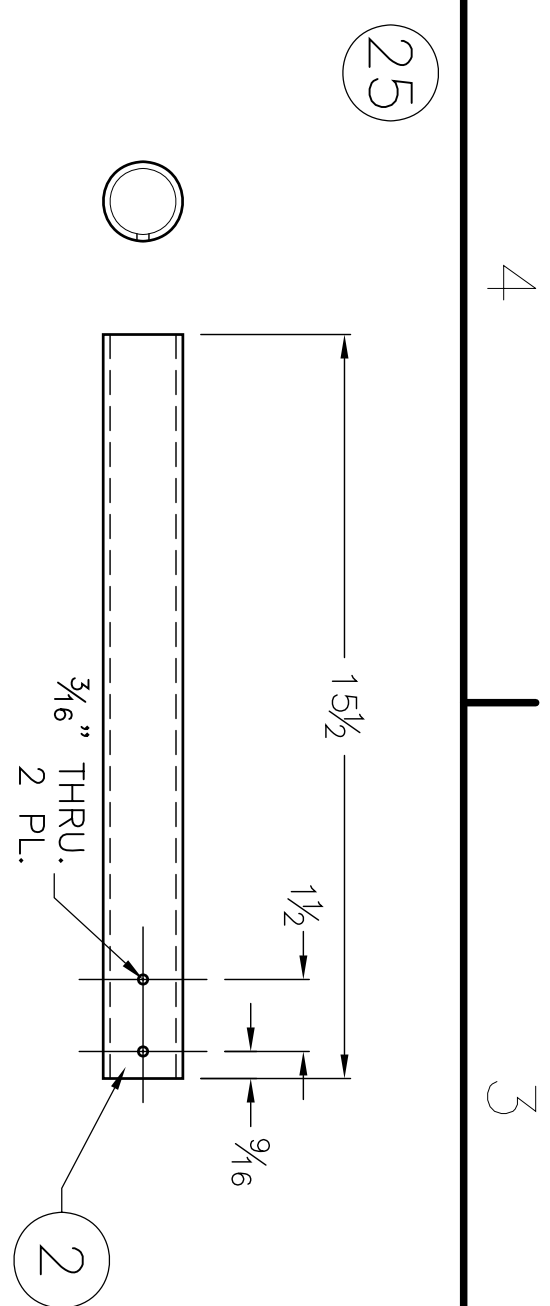
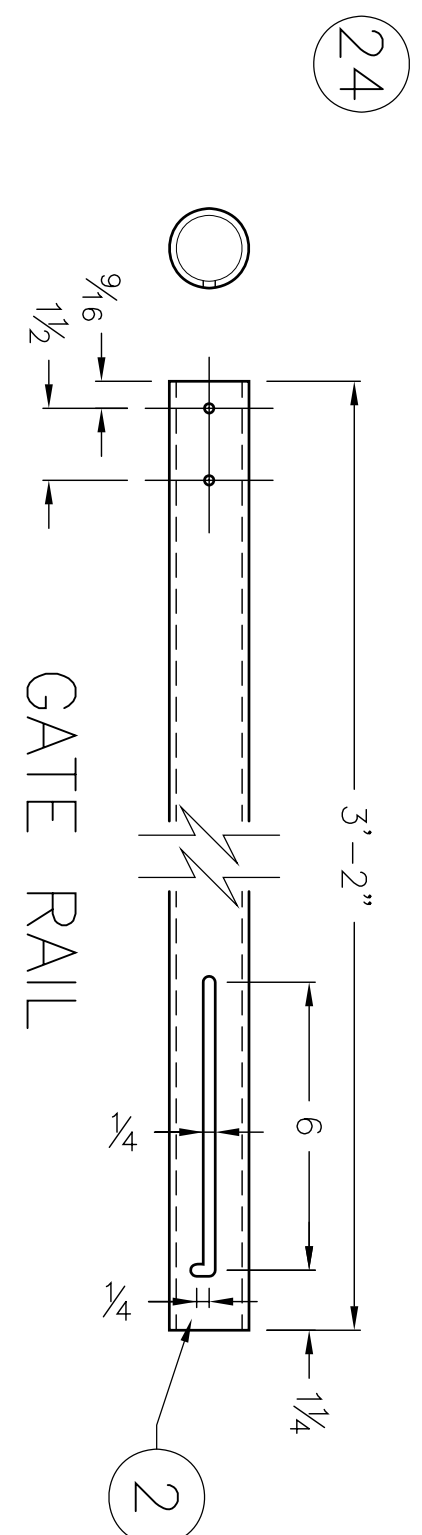
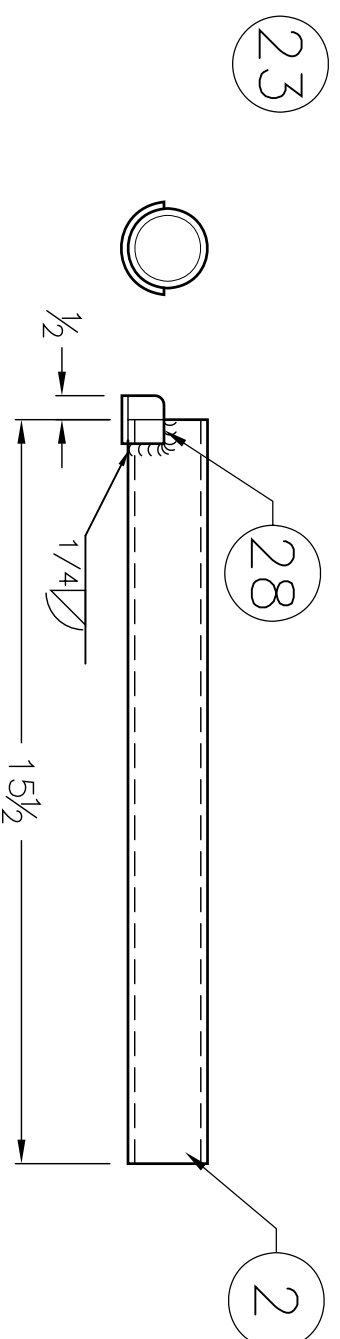
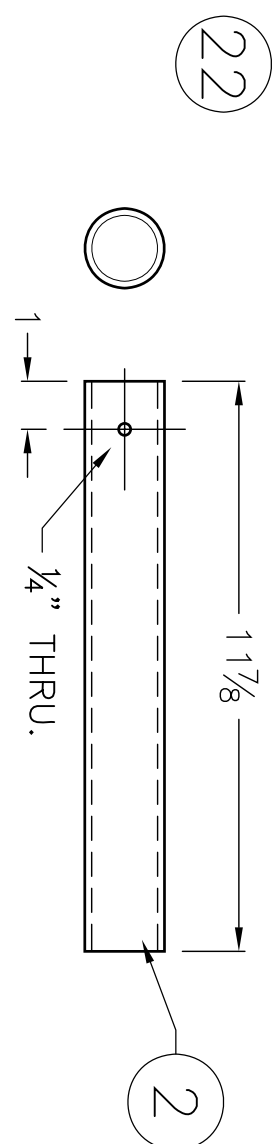
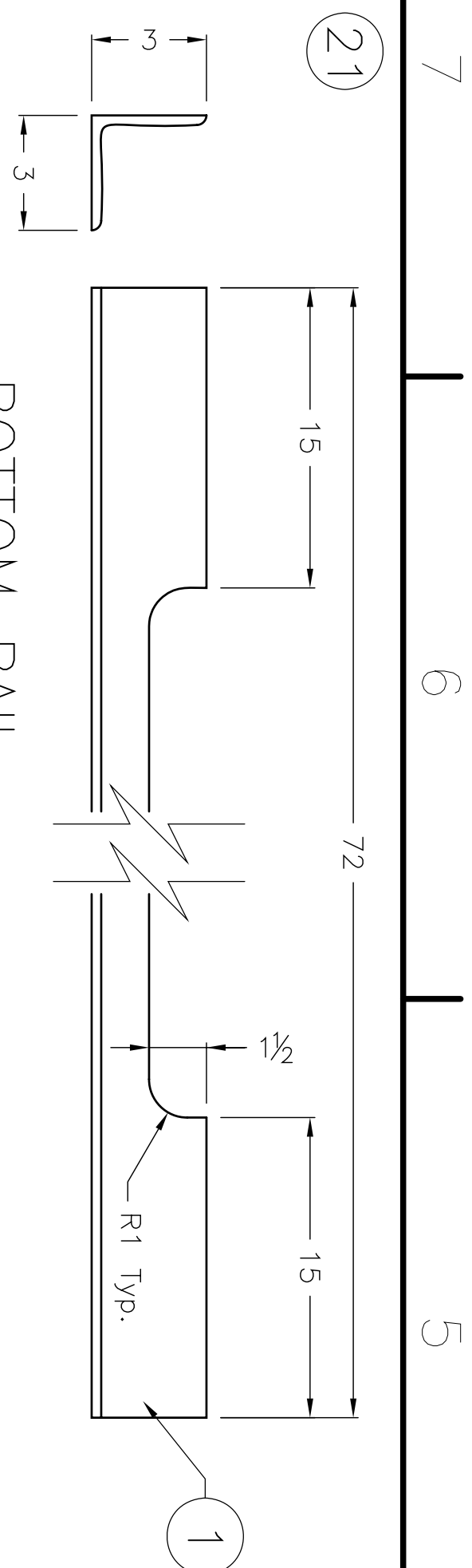
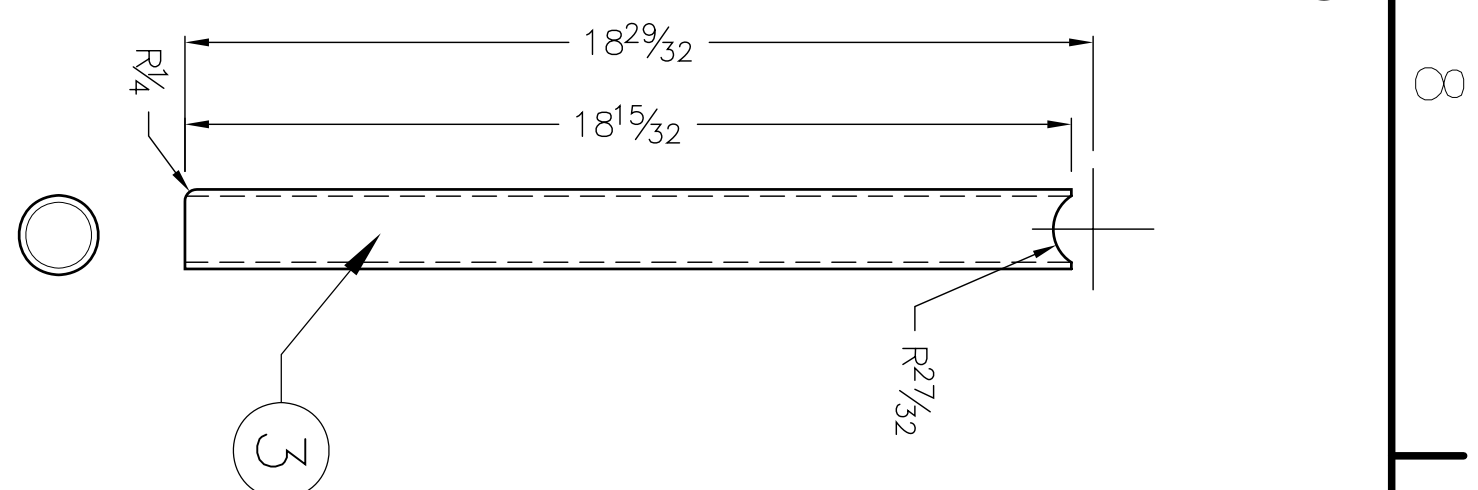
REVISIONS				
ZONE	REV	DESCRIPTION	DATE	APPROVED
	2	PER MARK-UPS ADDED NOTE & HEIGHT SUPPORT DETAIL	5/29/06 5/05/06	--

ITEM	QTY.	DESCRIPTION	LENGTH	PART NO.
1	1	CONNECTOR SHAFT 'A'	.	F05-0005-01
2	1	CONNECTOR SHAFT 'B'	.	F05-0005-02
3	1	CONNECTOR TUBE	.	F05-0005-03
4	1	PULL ROD	.	F05-0005-04
5	1	SUPPORT COLUMN	.	F05-0005-05
6	1	SUPPORT RAIL	.	F05-0005-06
7	1	STOP PLATE	.	F05-0005-07
8	1	RAIL PIN	.	F05-0005-08
9	2	MOUNTING COUPLER	.	F05-0005-09
.	.	.	.	—

[illegible]

NOTE:

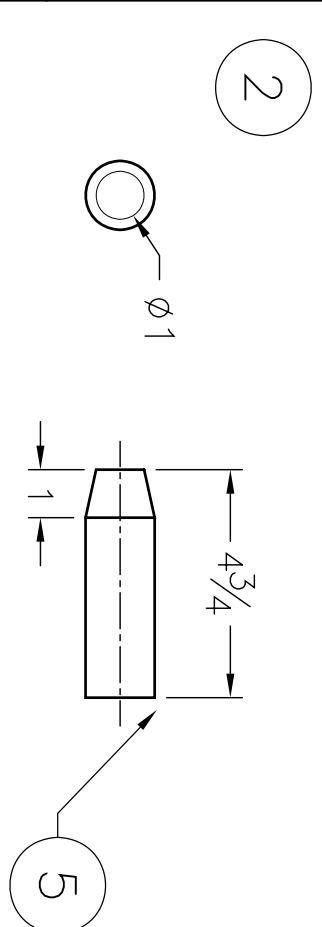
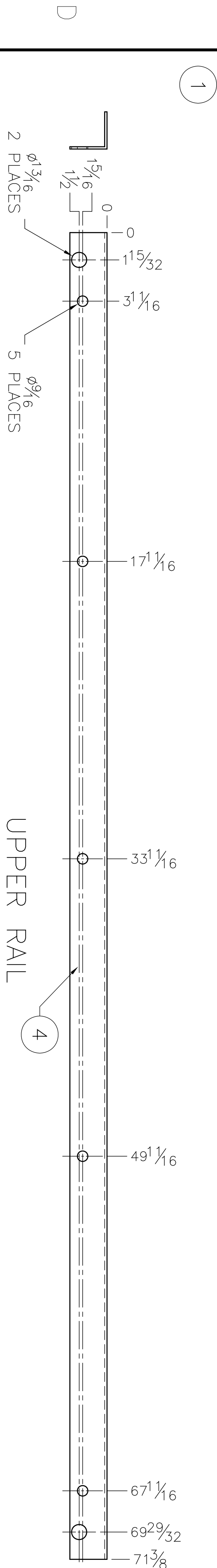
1. LEFT CORNER SUPPORT SHOWN, RIGHT CORNER SUPPORT IS OPPOSITE.
2. REMOVE ALL SHARP EDGES.



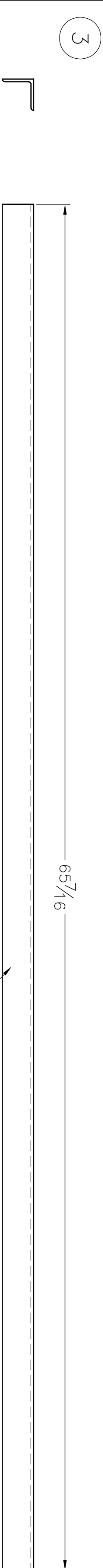
ZONE		DESCRIPTION	DATE	APPROVED	REVISIONS
1	REV	PER WORK-UPS ADDED ITEM 30, UPPATE ASSY TO INCLUDE - ADDED SECTION DENAL A-A CHANGED DENAL OF 601 ON ITEM 21	5/29/06 6/29/07	-- ---	
ITEM	QTY.	DESCRIPTION	LENGTH	PART NO.	
1	AR	3"x3"x $\frac{1}{4}$ " 6061-16 ALUM.	-	-	
2	AR	1 $\frac{1}{2}$ " SCH. 40 STRPIPE 6061-16 ALUM.	-	-	
3	AR	1" SCH. 40 STRPIPE 6061-16 ALUM.	-	-	
4	AR	1 $\frac{1}{2}$ " SCH. 40 STRPIPE 6061-16 ALUM.	-	-	
5	AR	1"x1"x $\frac{1}{2}$ " 6061-16 ALUM ANGLE.	-	-	
20	2	VERTICAL SUPPORT	-	F05-0008-20	
21	1	BOTTOM RAIL	-	F05-0008-21	
22	2	CONNECTING TUBE	-	F05-0008-22	
23	1	UPPER RAIL 'A'	-	F05-0008-23	
24	1	GATE RAIL	-	F05-0008-24	
25	1	UPPER RAIL 'B'	-	F05-0008-25	
26	1	SLIDE PIN	-	F05-0008-26	
27	2	MATING PIN	-	F05-0008-27	
28	1	GATE STOP	-	F05-0008-28	
29	2	HINGE	-	F05-0015	
30	1	RAMP STOP	-	F05-0008-30	
31	1	$\frac{1}{2}$ "-20 SHOULDER BOLT, (McMaster-Carr)	-	94496A230	
32	1	$\frac{1}{2}$ "-20 NUTLOK NUT	-	-	
33	1	$\frac{1}{2}$ " FLAT WASHER	-	-	
34	1	BALL KNOB, $\phi\frac{1}{4}$ " W/ $\frac{1}{4}$ "-20x1" STUD	-	-	

[illegible]

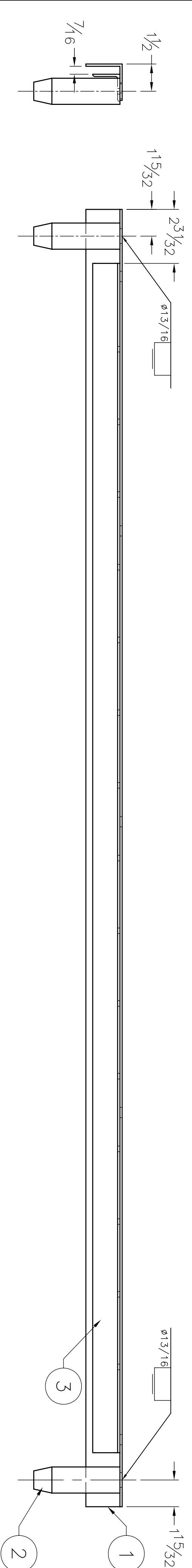
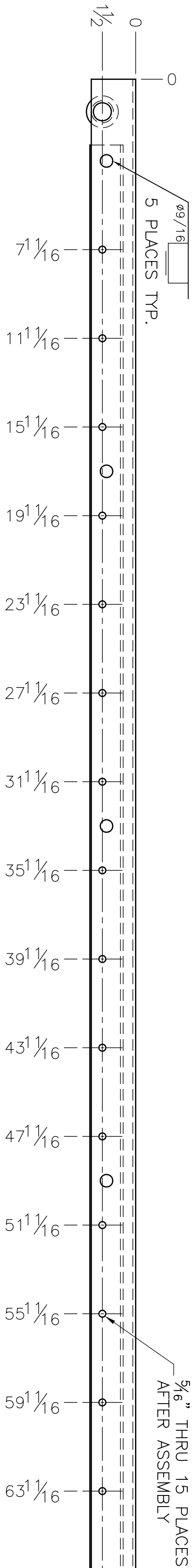
REVISIONS				
ZONE	REV	DESCRIPTION	DATE	APPROVED
1	PER MARK-UPS		5/30/06	---
ITEM	QTY.	DESCRIPTION	LENGTH	PART NO.
1	1	UPPER RAIL	.	F05-0011-01
2	1	CONNECTING PIN	.	F05-0011-02
3	1	LOWER RAIL	.	F05-0011-03
4	AR	2"x2"x8" SQ CORNER 6063 ALUM ANGLE	.	
5	AR	1 1/2" ALUM ROUND STOCK	.	--
6	AR	1 1/2"x1 1/2"x8" 6061 ALUM ANGLE	.	--



CONNECTING PIN



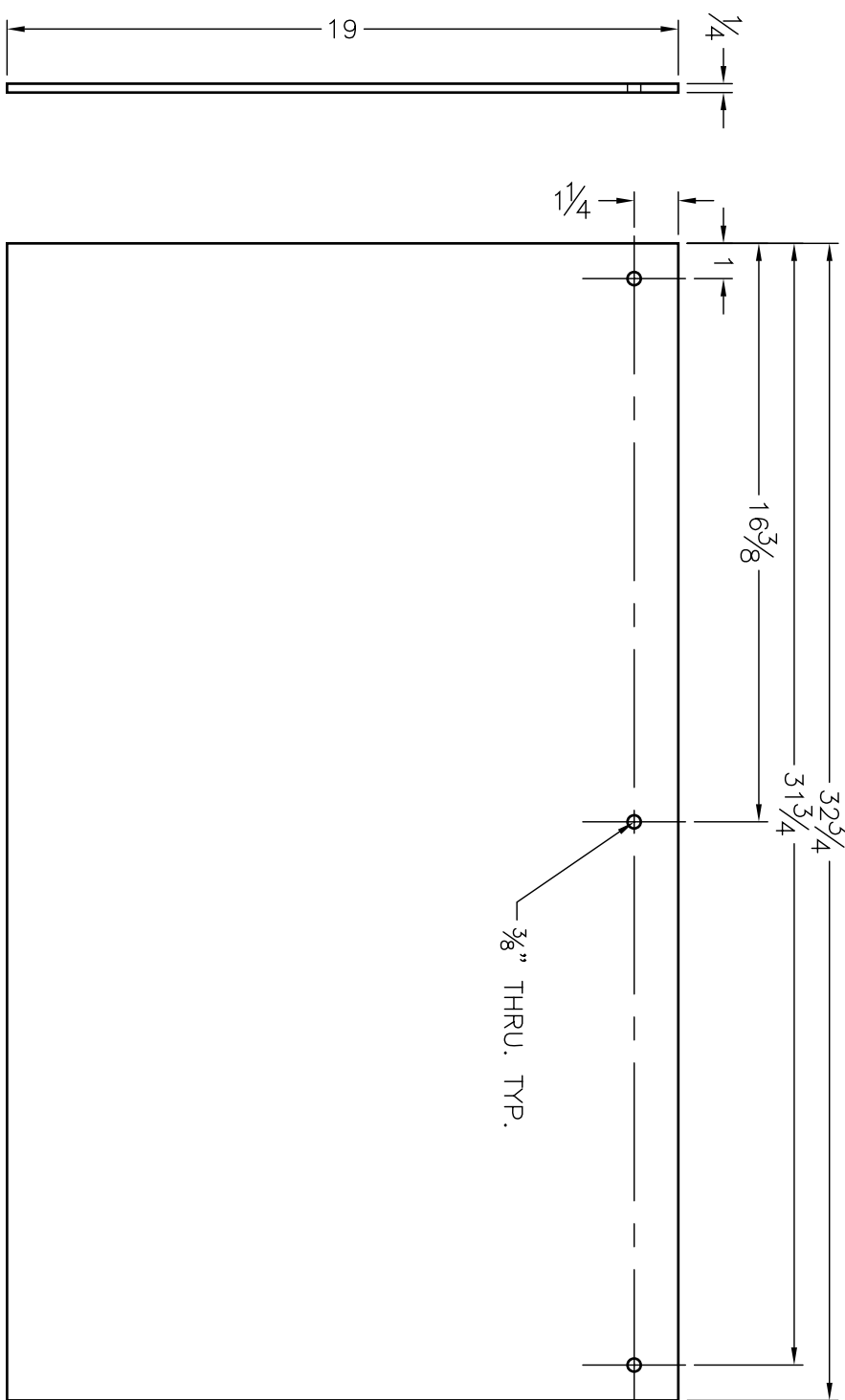
LOWER RAIL



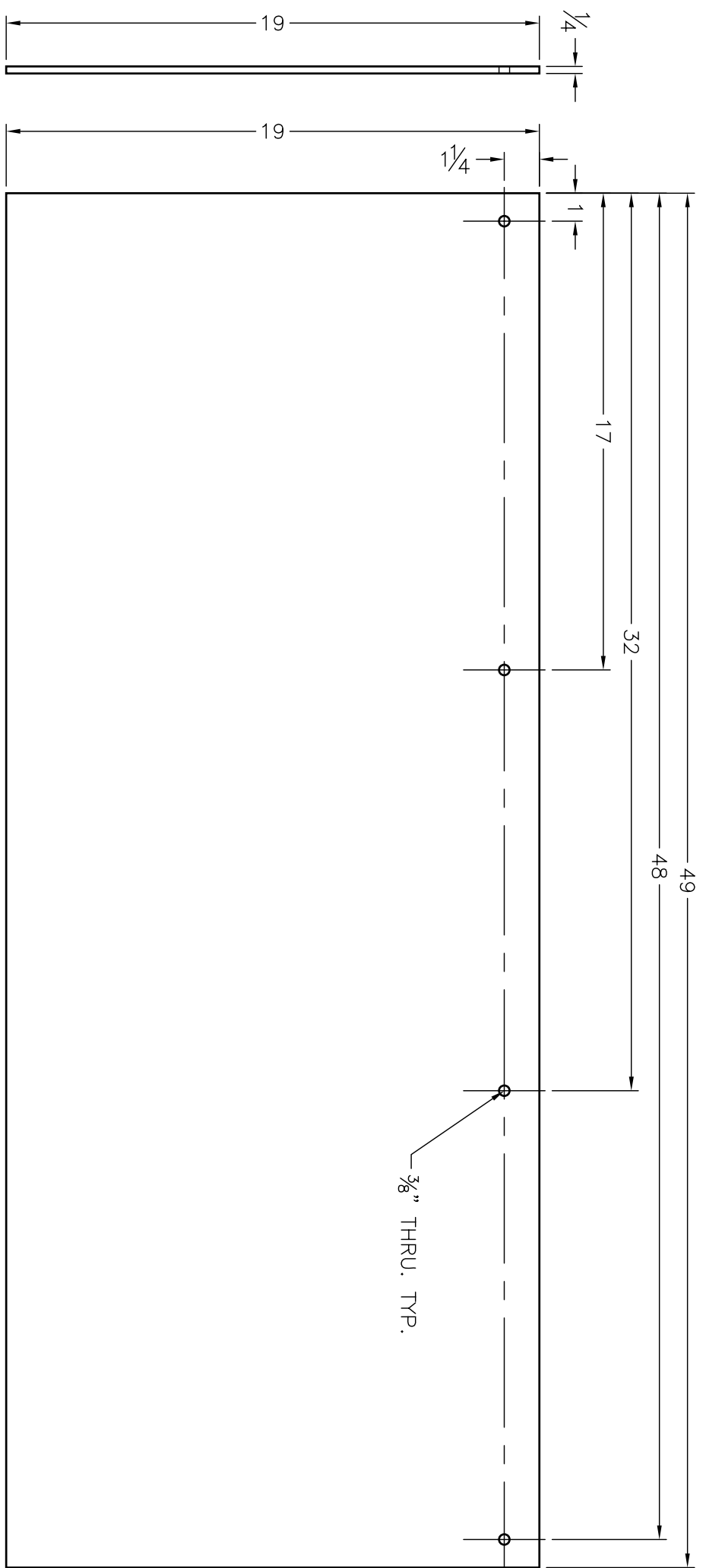
FIRST			
200 Bedford Street, Manchester, N.H. 03101 (603) 666-3906 • FAX (603) 666-3907			
REV	DATE	BY	DATE
1	PER MARK-UPS	JR	05/06
UNLESS OTHERWISE SPECIFIED:			
TOLERANCES UNLESS SPECIFIED:			
FRACTION 1/16" FLAT OR STRAIGHT			
HOLE PARALLEL			
HOLE CONCENTRIC TIR			
SURFACE FINISH			
SIZE			
DRAWN BY			
DATE			
SCALE			
CHECKED			
DATE			
SHEET NO.			
1			

REVISIONS			
ZONE	REV	DESCRIPTION	DATE
-	-	-	-

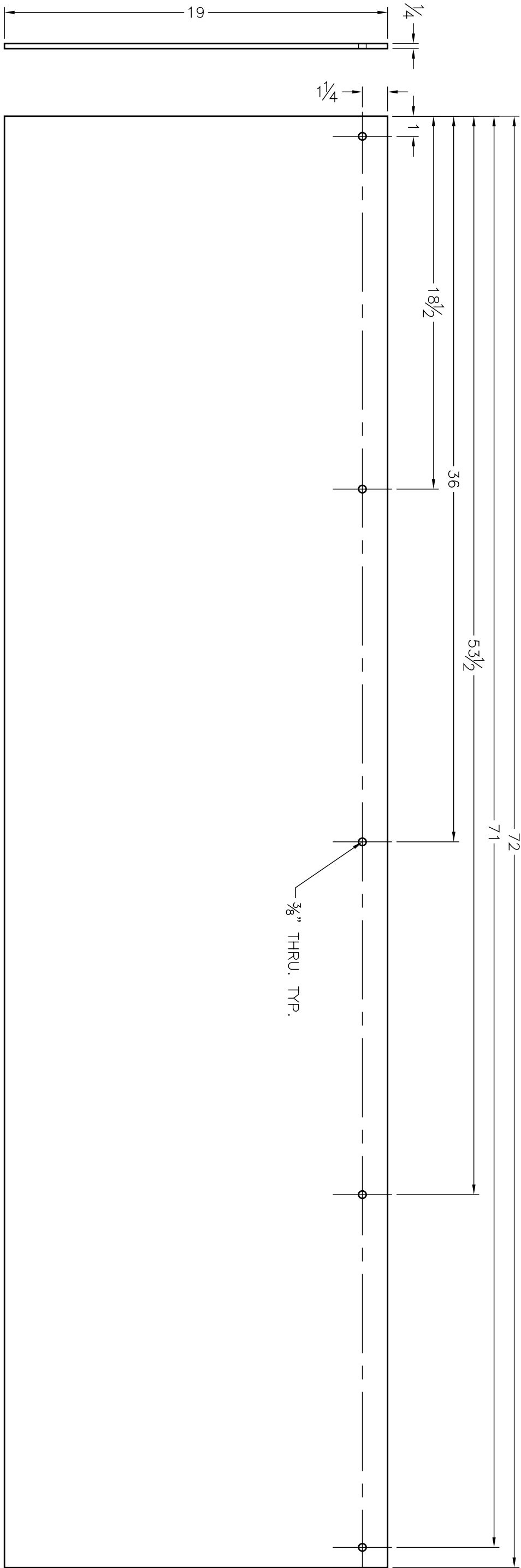
ITEM	QTY.	DESCRIPTION	LENGTH	PART NO.
1	1	1/2" POLYCARBONATE SHEET	-	-



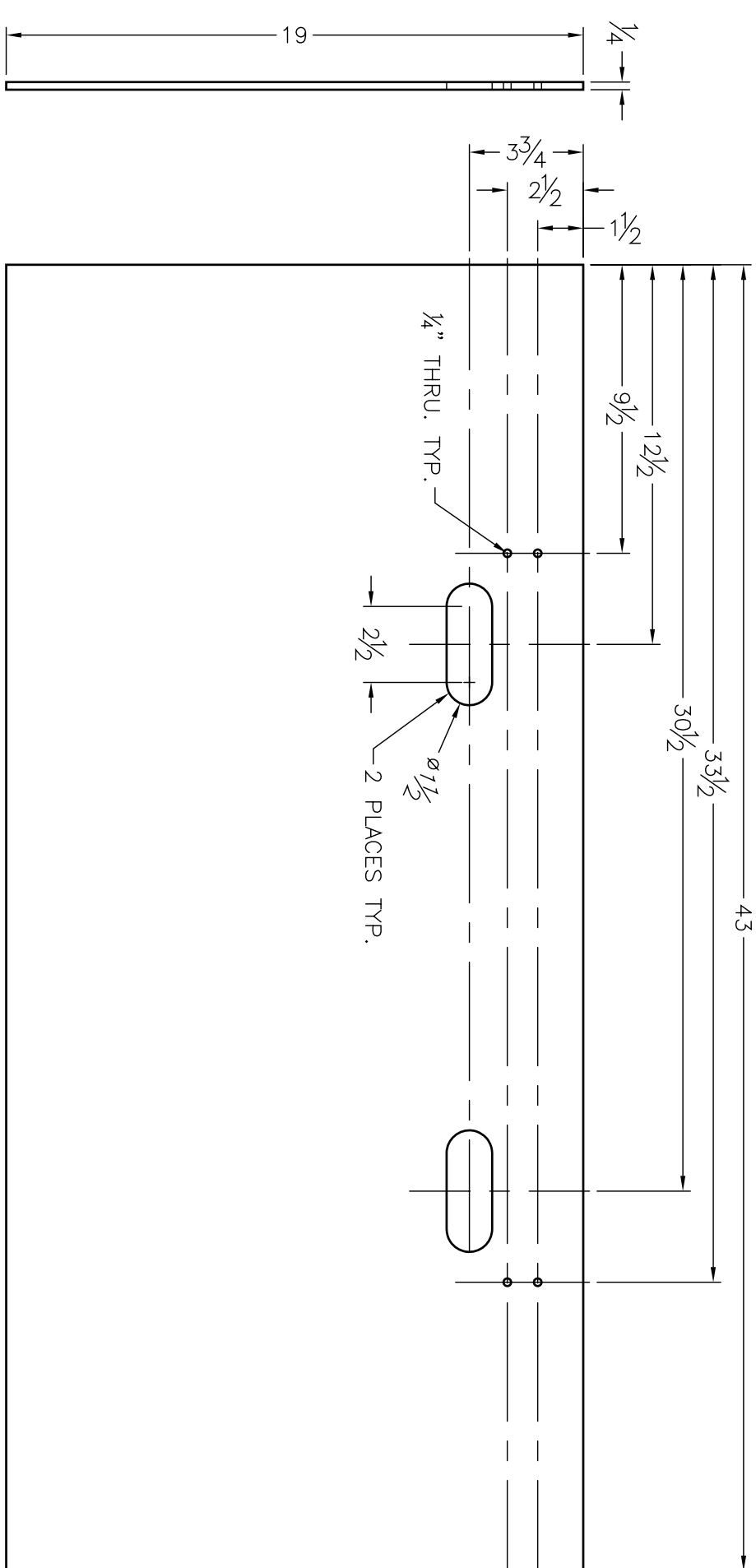
(A) 4 TOTAL



(B) 4 TOTAL



(C) 4 TOTAL



(G) 4 TOTAL

2008 FIELD

BORDER POLYCARBONATE

2008 FIELD

BORDER POLYCARBONATE

200 Bedford Street, Manchester, N.H. 03101

(603) 666-3906 • FAX (603) 666-3907

2008 FIELD

BORDER POLYCARBONATE

REV. 1

DATE 11/06/07

BY JRD

SCALE NONE

DATE 11/06/07

CHECKED -

DATE -

SHEET NO. 1

2008 FIELD

BORDER POLYCARBONATE

2008 FIELD

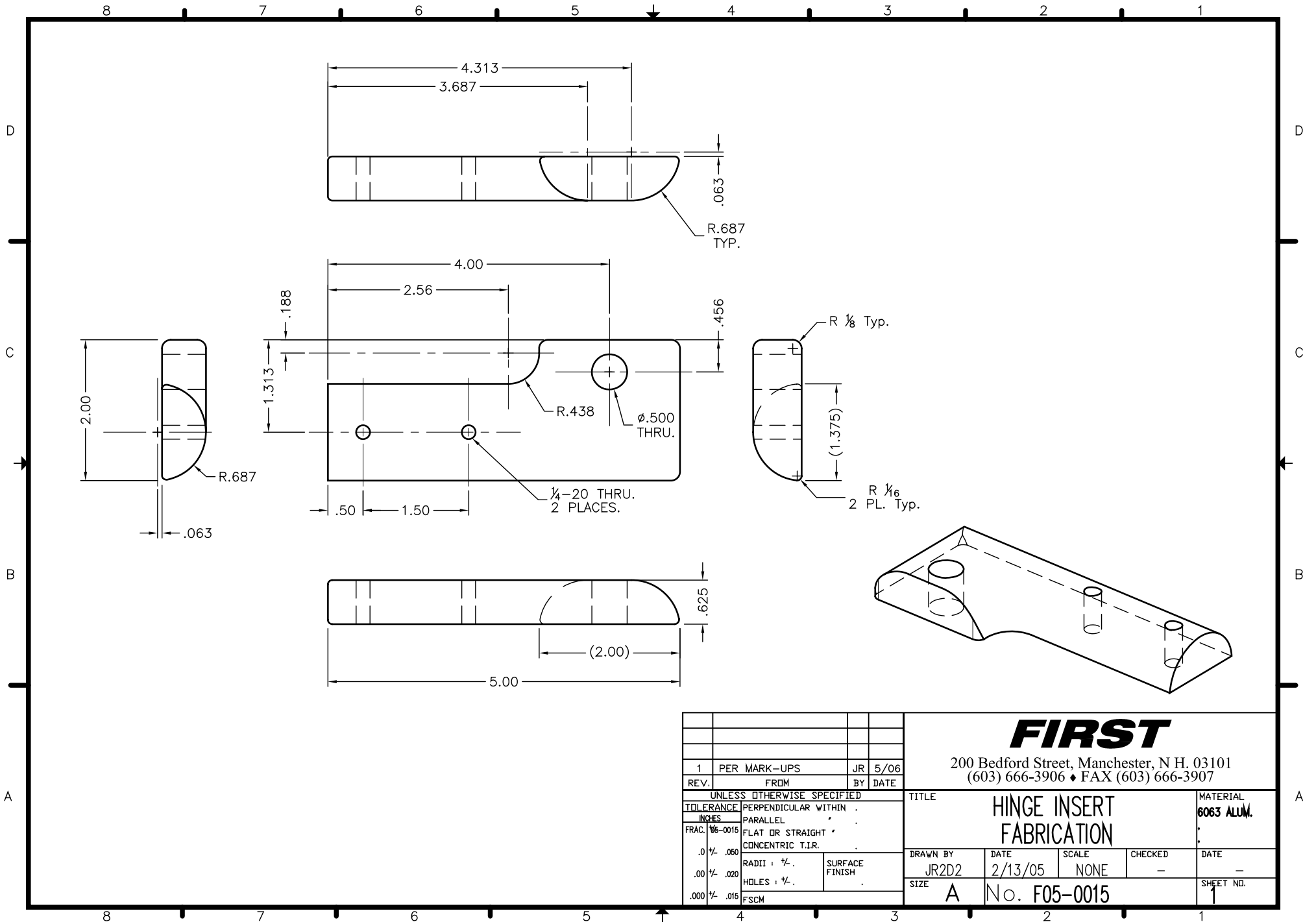
BORDER POLYCARBONATE

2008 FIELD

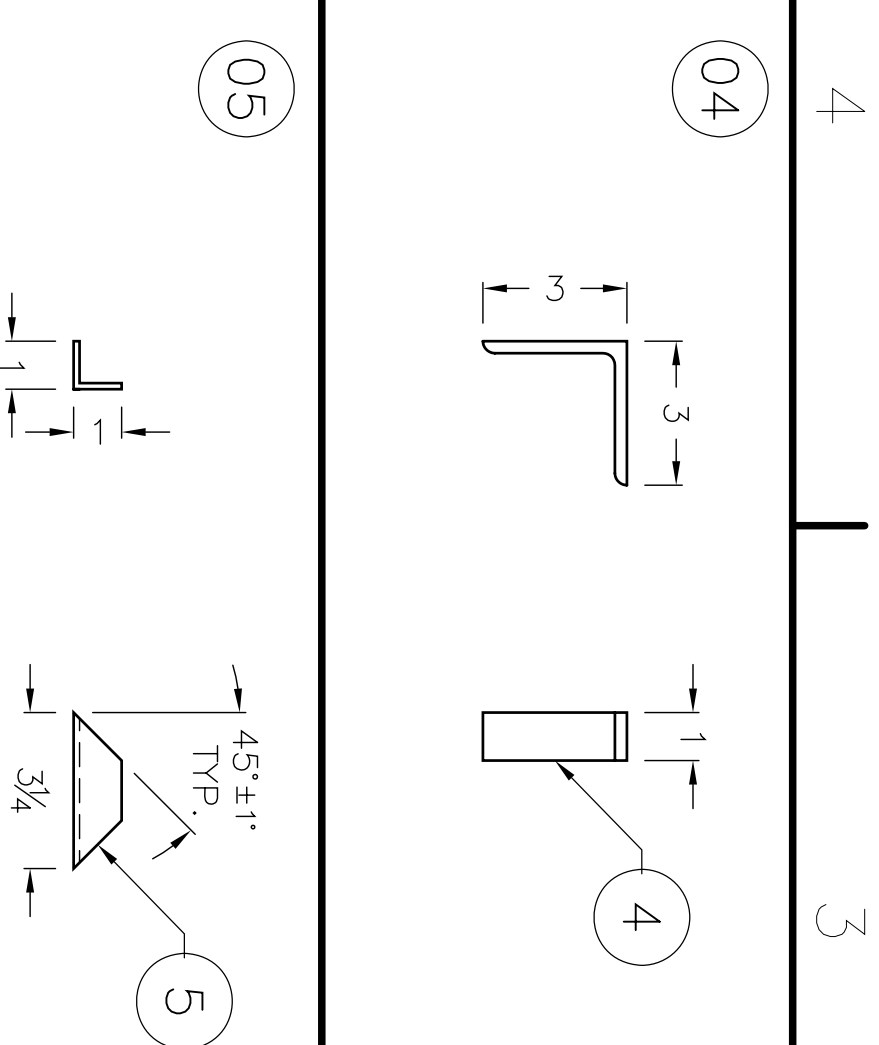
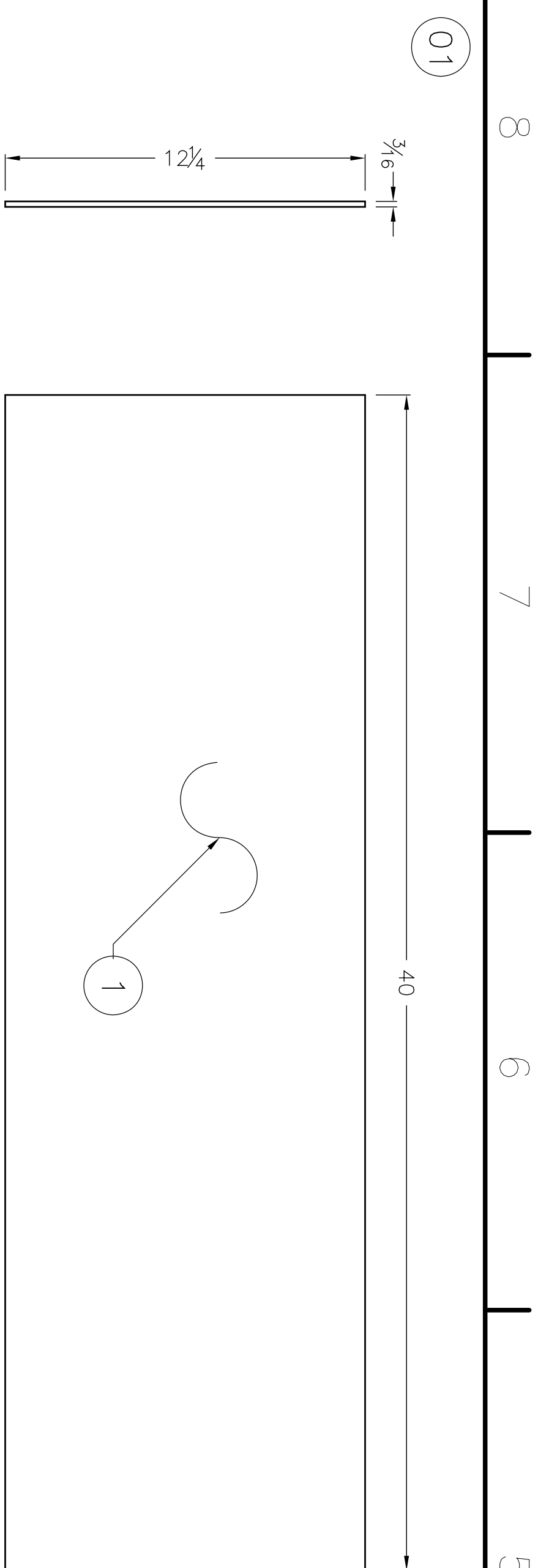
BORDER POLYCARBONATE

2008 FIELD

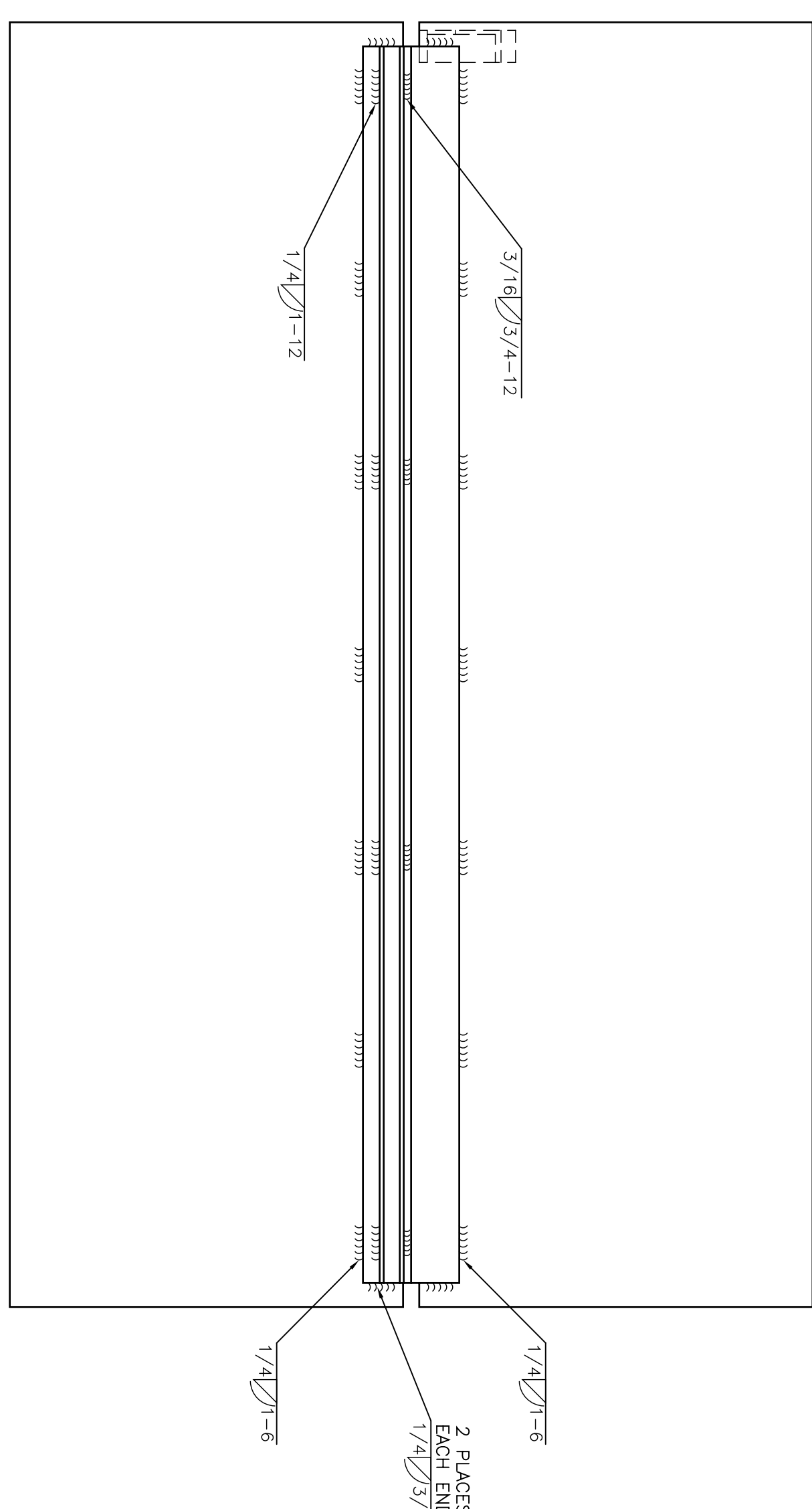
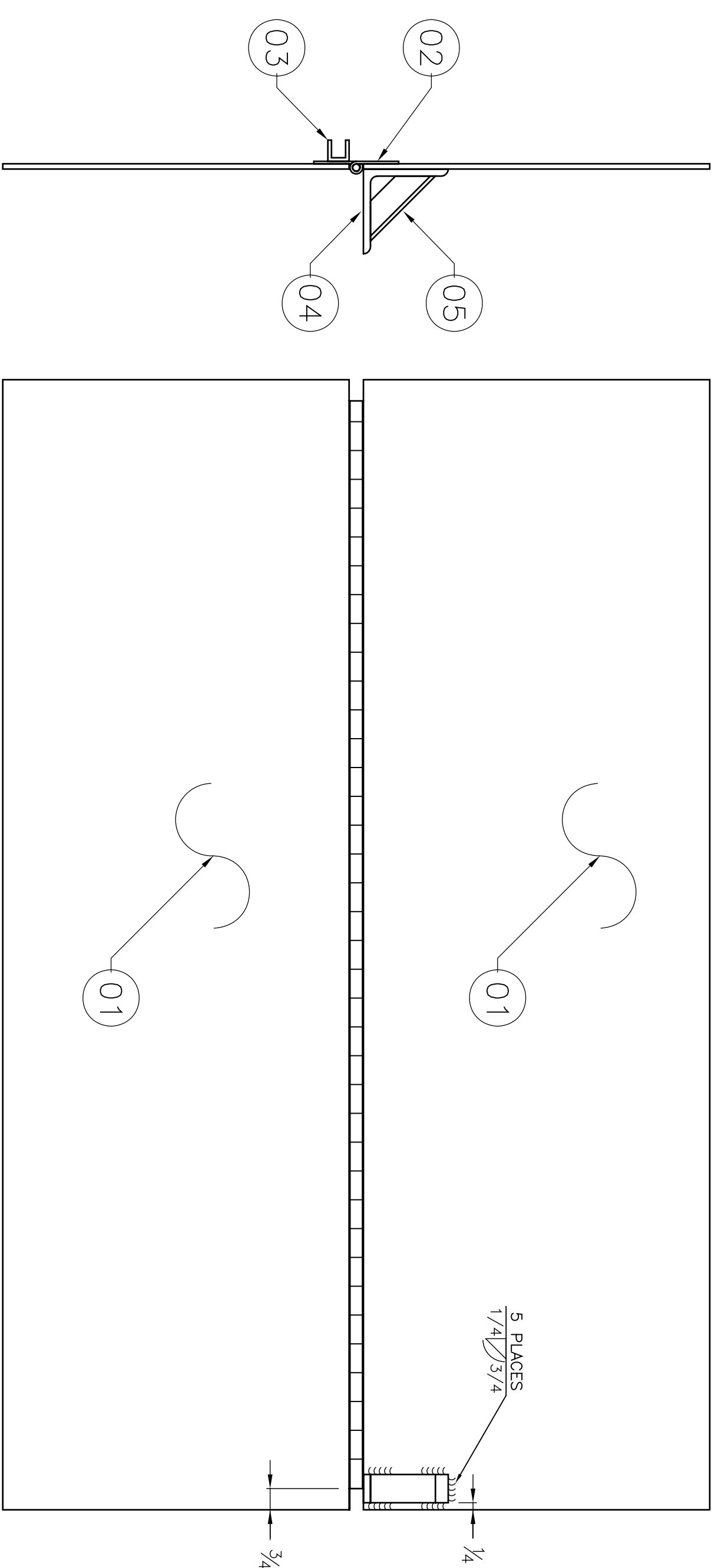
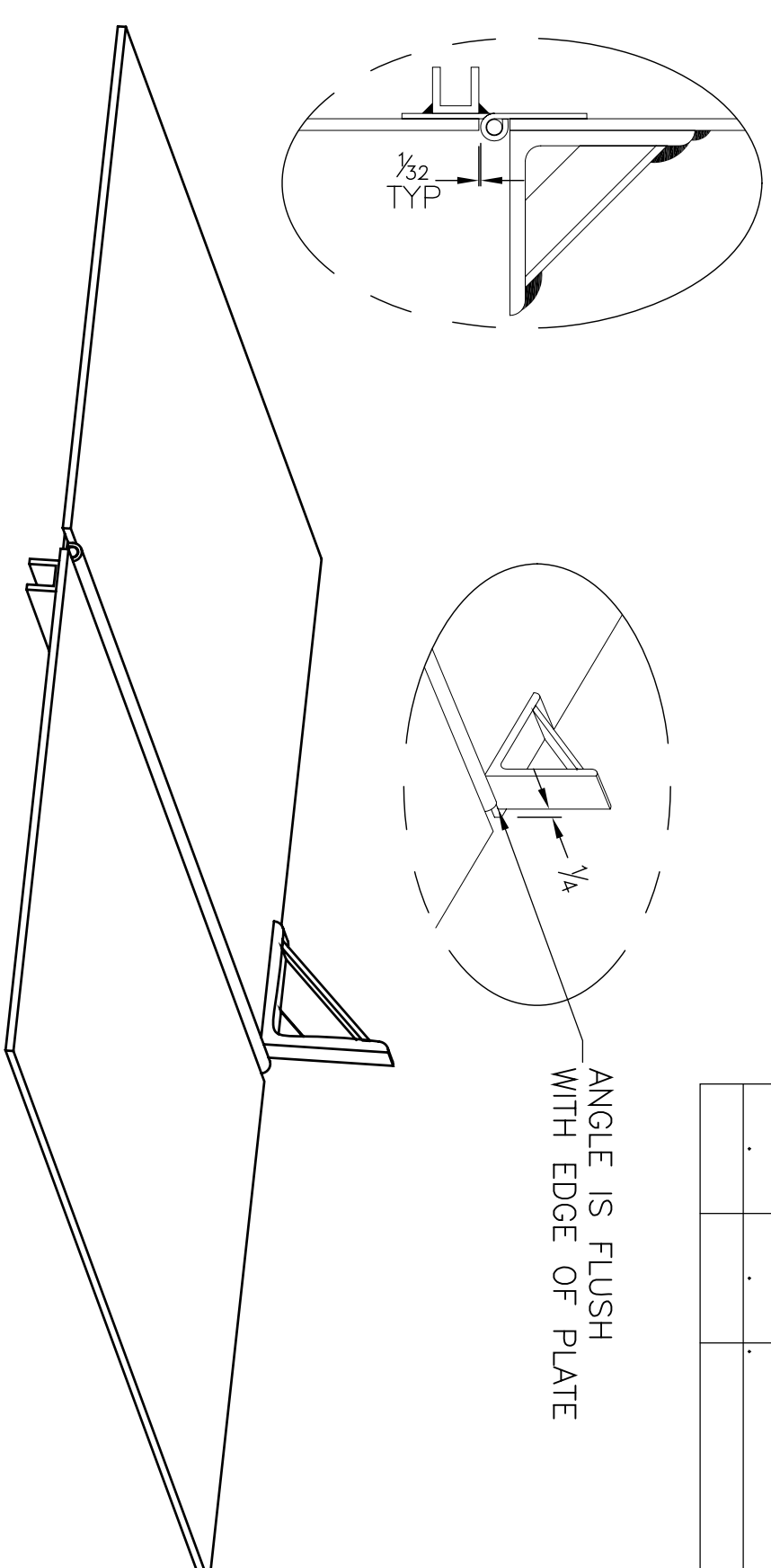
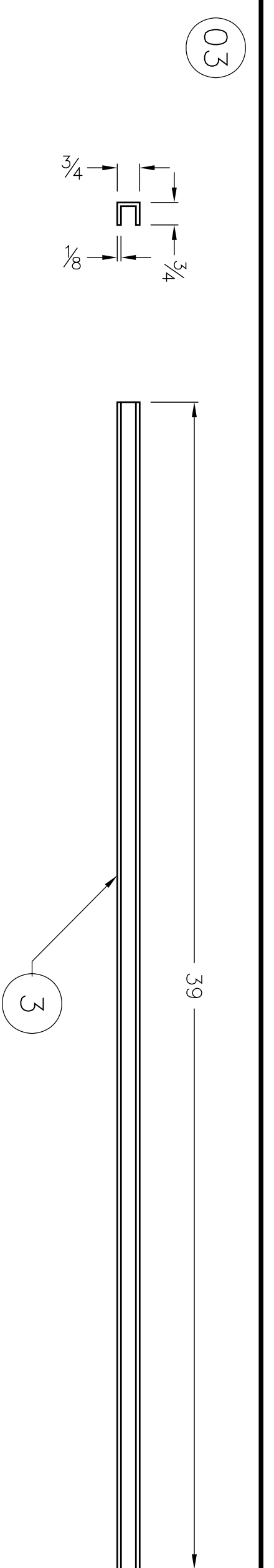
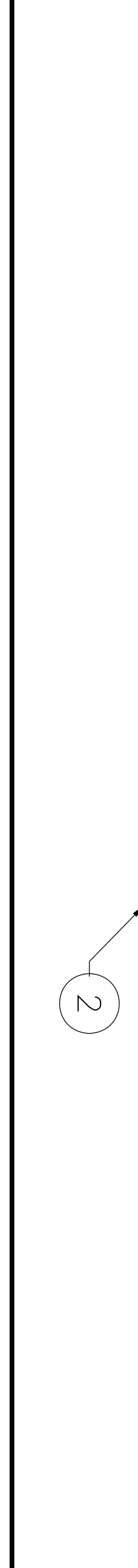
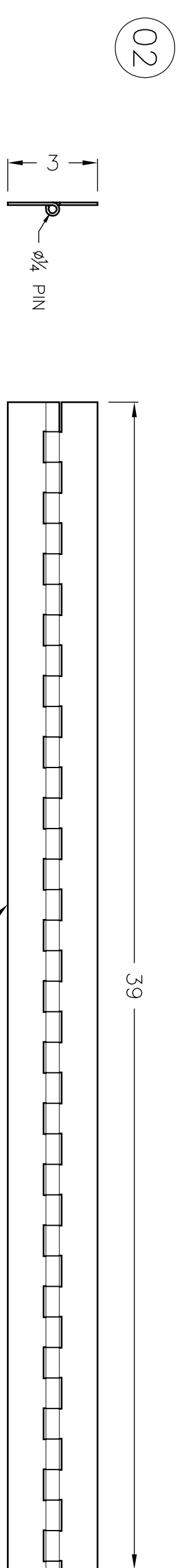
BORDER POLYCARBONATE



				FIRST			
				200 Bedford Street, Manchester, N H. 03101 (603) 666-3906 ♦ FAX (603) 666-3907			
1	PER MARK—UPS		JR	5/06			
REV.	FROM		BY	DATE			
UNLESS OTHERWISE SPECIFIED				TITLE HINGE INSERT FABRICATION			
TOLERANCE INCHES							
FRAC. 1/16-.0015				PARALLEL			
.0 1/2 .060				FLAT OR STRAIGHT			
				CONCENTRIC T.I.R.			
.00 1/2 .020				RADII : 1/2 .		SURFACE FINISH	
.000 1/2 .015				HOLES : 1/2 .			
FSCM							
4				3		2	
				1			
DRAWN BY JR2D2				DATE 2/13/05		SCALE NONE	
CHECKED —				DATE —		SHEET NO. 1	
SIZE A				No. F05-0015			



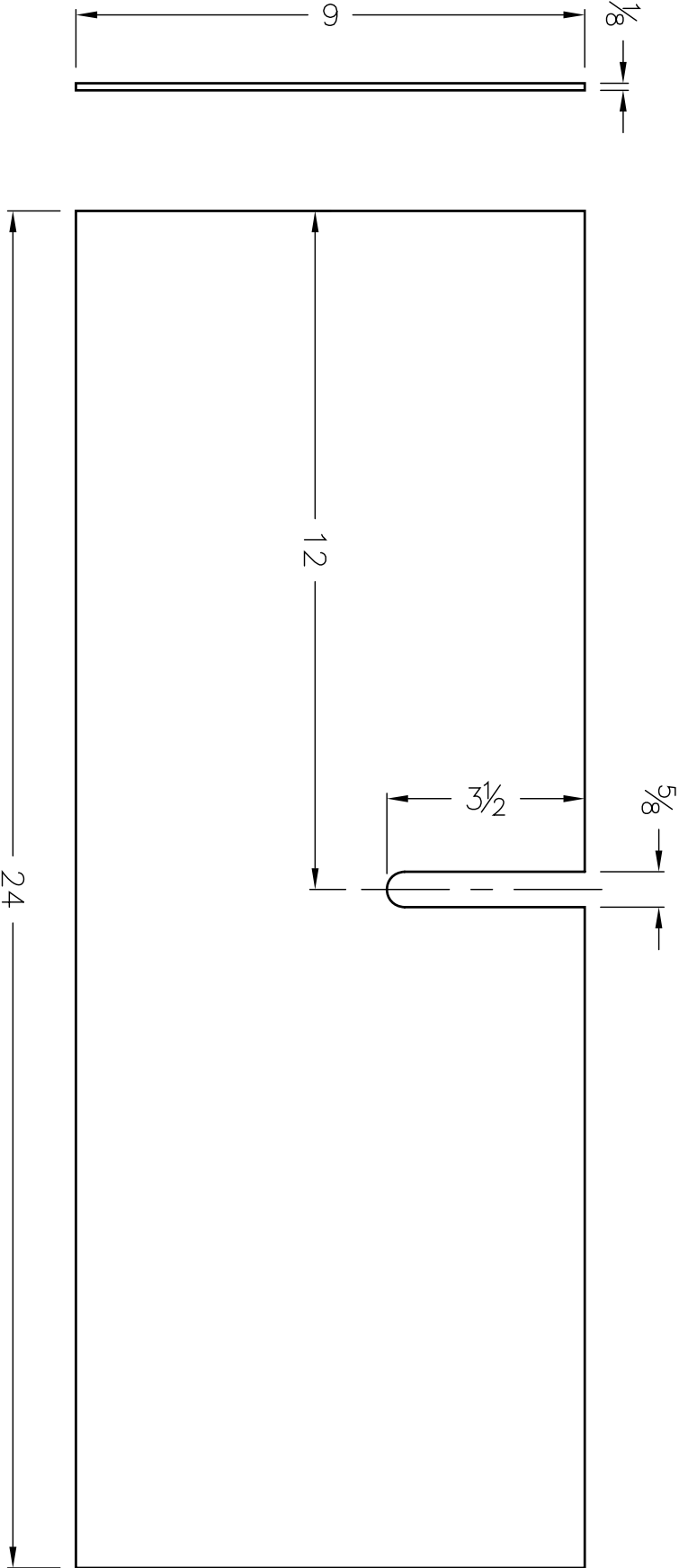
ITEM QTY. DESCRIPTION LENGTH PART NO.					
ZONE	REV		DESCRIPTION	DATE	APPROVED
1		CARD DOORING NUMBER PLATE TO ROO-0016		10/15/06	
1	AR	$\frac{3}{8}$ " 3003 ALUM DIAMOND PLATE	-		
2	AR	3" ALUMINIUM HINGE, $\frac{1}{2}$ " PIN	-		
3	AR	$\frac{3}{4}$ " \times $\frac{1}{2}$ " \times $\frac{3}{8}$ " 6061-T6 ALUMINIUM CHANNEL	-		
4	AR	3"x3" $\frac{1}{4}$ " 6061-T6 ALUMINIUM ANGLE	-		
5	AR	1"x1" \times $\frac{3}{8}$ " 6061-T6 ALUMINIUM ANGLE	-		
01	2	RAMP PLATE	.	F05-0020-01	
02	1	HINGE	.	F05-0020-02	
03	1	CHANNEL	.	F05-0020-03	
04	1	KICK ANGLE	.	F05-0020-04	
05	1	GUSSET	.	F05-0020-05	
.	.	.	.	-	
.	.	.	.	-	



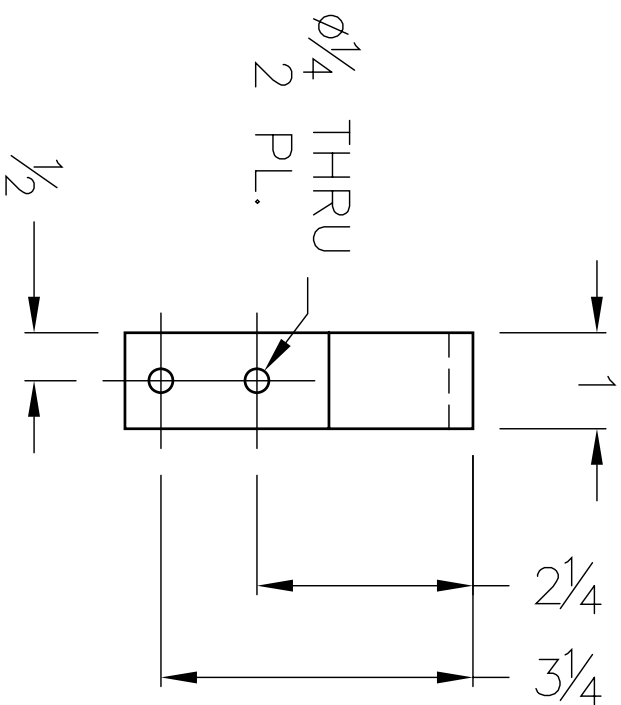
NOTE:
REMOVE ALL SHARP EDGES.

<div style="text-align: center;"> <h1 style="margin: 0;">FIRST</h1> <p style="margin: 0;">200 Bedford Street, Manchester, N. H. 03101 (603) 666-3906 • FAX (603) 666-3907</p> </div>									
REV. 1		PER. MARK-CPS		JIR 5/06					
UNLESS OTHERWISE SPECIFIED									
TOLERANCES UNLESS SPECIFIED									
FRACTIONS: PARALLEL WITHIN .									
MILLS									
RAC. 1/4" - 1/8" FLAT DR. STRAIGHT									
.004" - .008 CONCENTRIC TIR									
.004" - .008		RADI. 1/4" - 1/8"		SURFACE FINISH					
FCDM		HILES 1/4" - 1/8"							
TITLE						MATERIAL			
FIELD ENTRY RAMP									
FABRICATION AND ASSEMBLY									
DRAWN BY		DATE		SCALE		CHECKED		DATE	
JR202		01/14/05		NONE		—		—	
D		No. F05-0016						SHEET NO. 1	

ITEM	QTY.	DESCRIPTION	LENGTH	PART NO.
1	1	HDPE SHEET, 1/8" THICK (YELLOW)	-	-
-	-	-	-	-
-	-	-	-	-



										<div>FIRST</div> <div>200 Bedford Street, Manchester, N.H. 03101 (603) 666-3906 ♦ FAX (603) 666-3907</div>									
										TITLE		FRC FIELD		MATERIAL					
												TRIP GUARD							
REV.		FROM		BY		DATE						DRAWN BY		DATE		CHECKED		DATE	
TOLERANCE		PERPENDICULAR WITHIN										SIZE		NO.		F07-0023		SHEET NO.	
NOTES		PARALLEL										JRR		12/17/06					
FRACTION		1/32		FLAT OR STRAIGHT															
CONCENTRIC T.I.R.																			
RADIUS		1/2		SURFACE FINISH															
HOLES		1/2																	
.000		1/2		.005		FSCM													

[illegible]