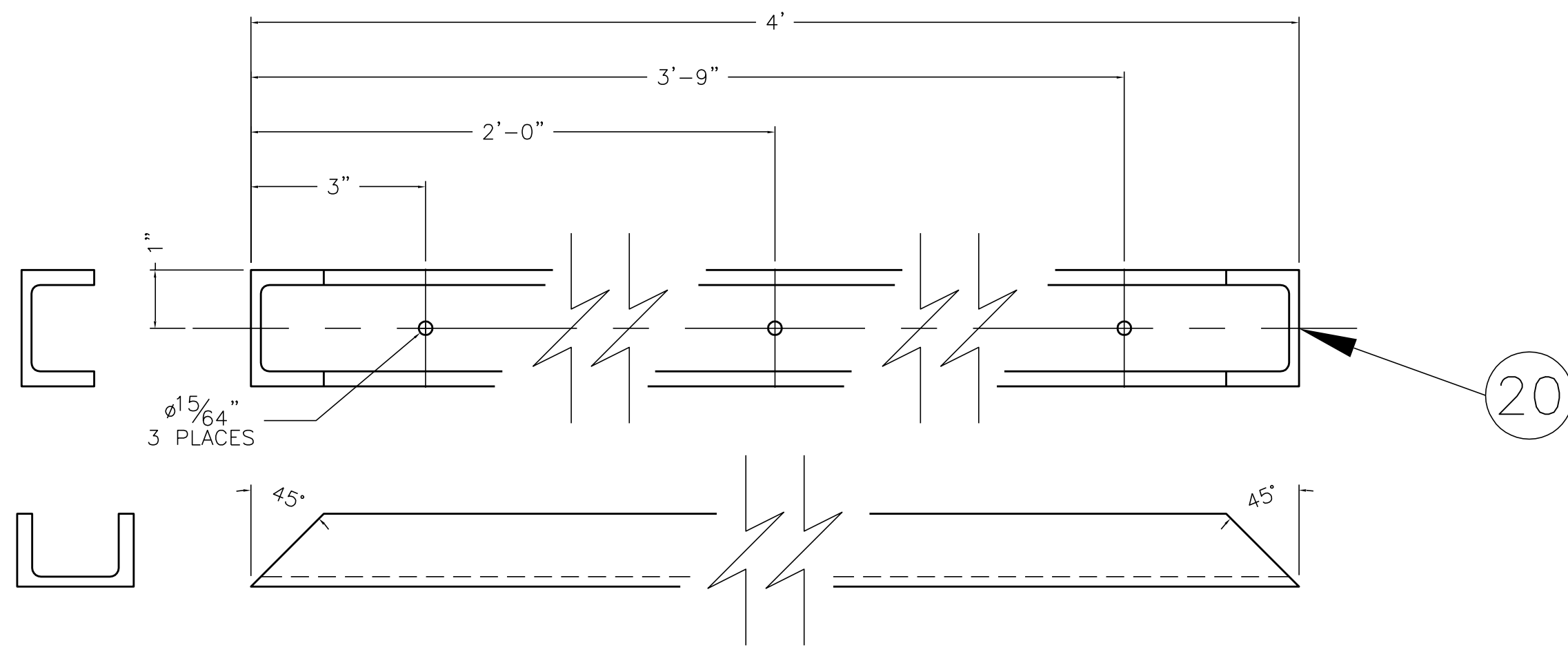
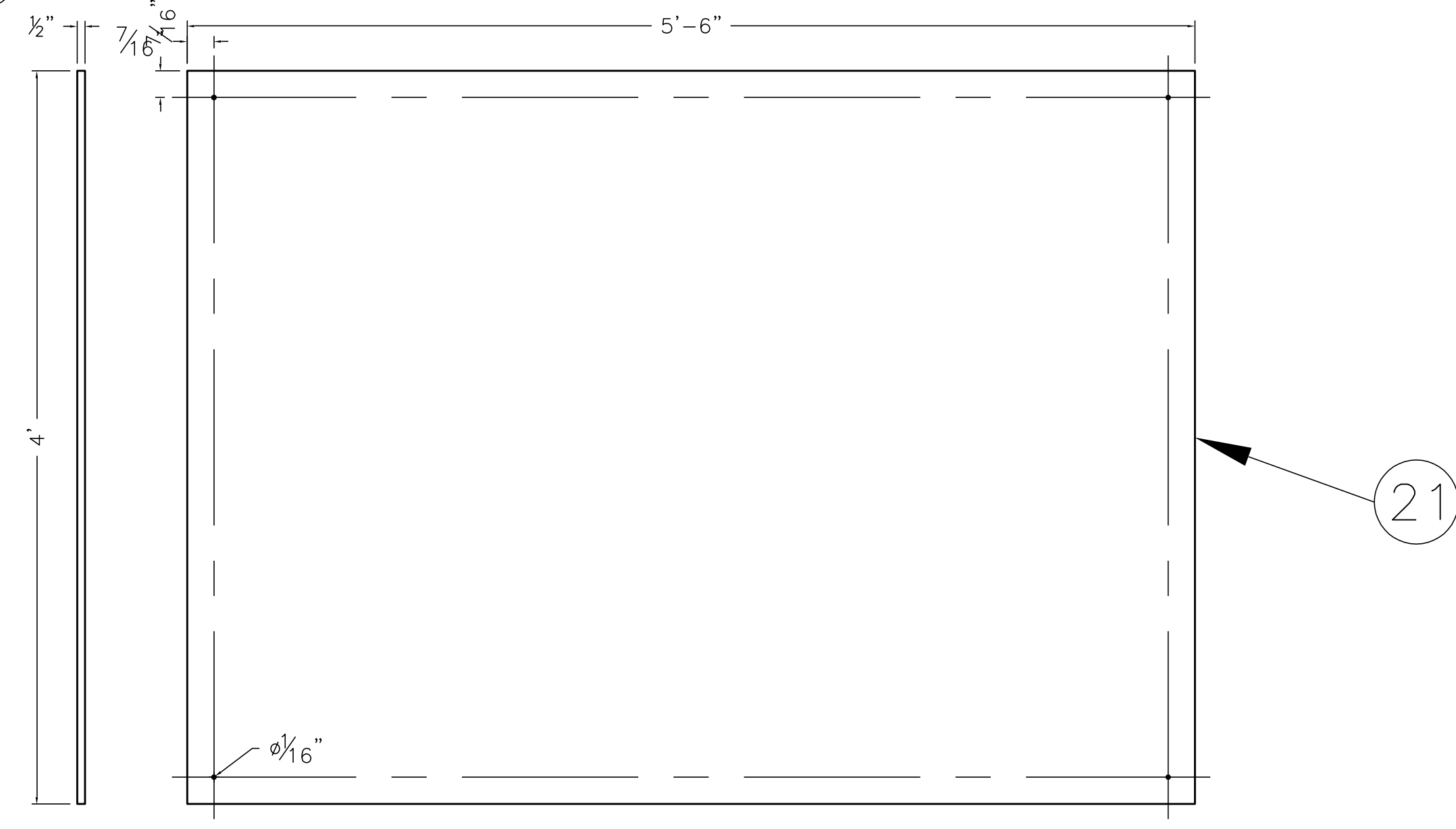


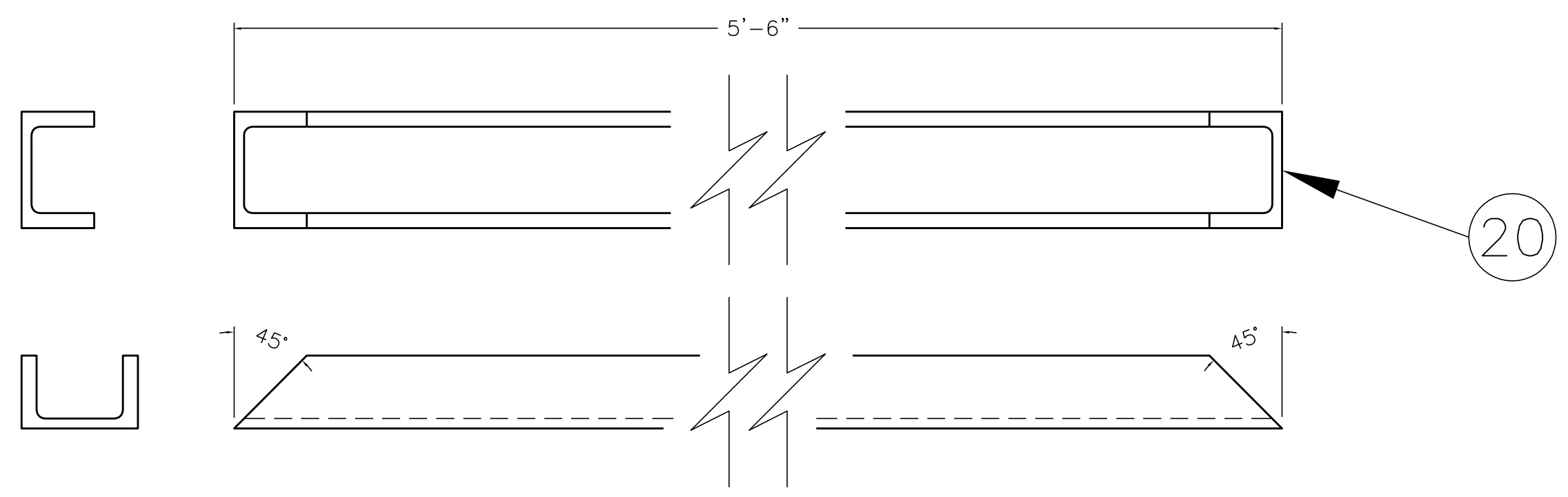
1



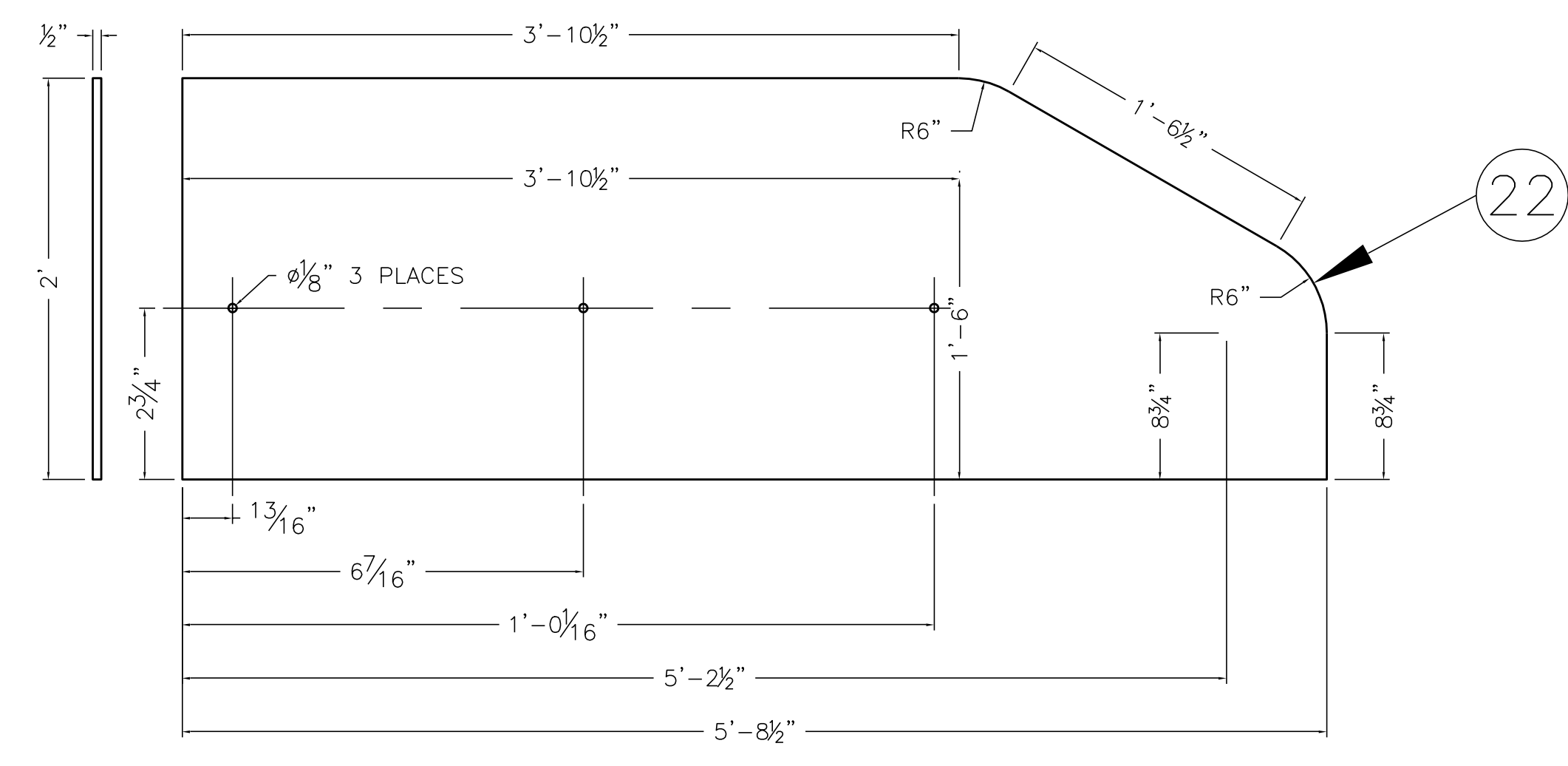
5



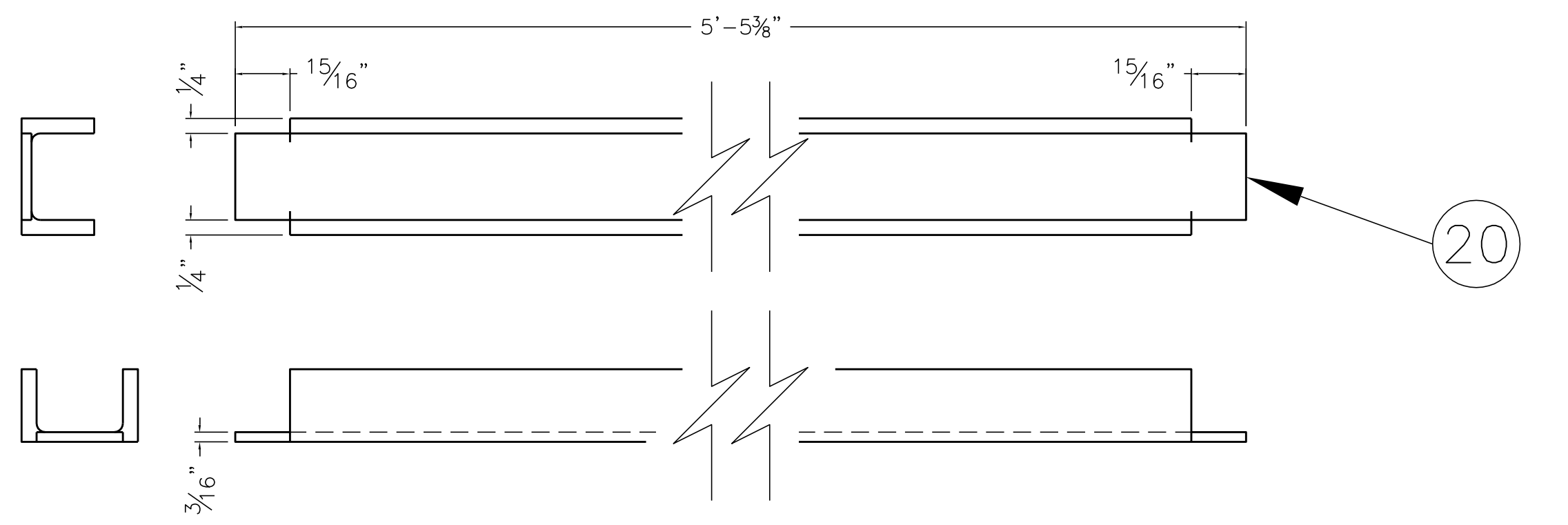
2



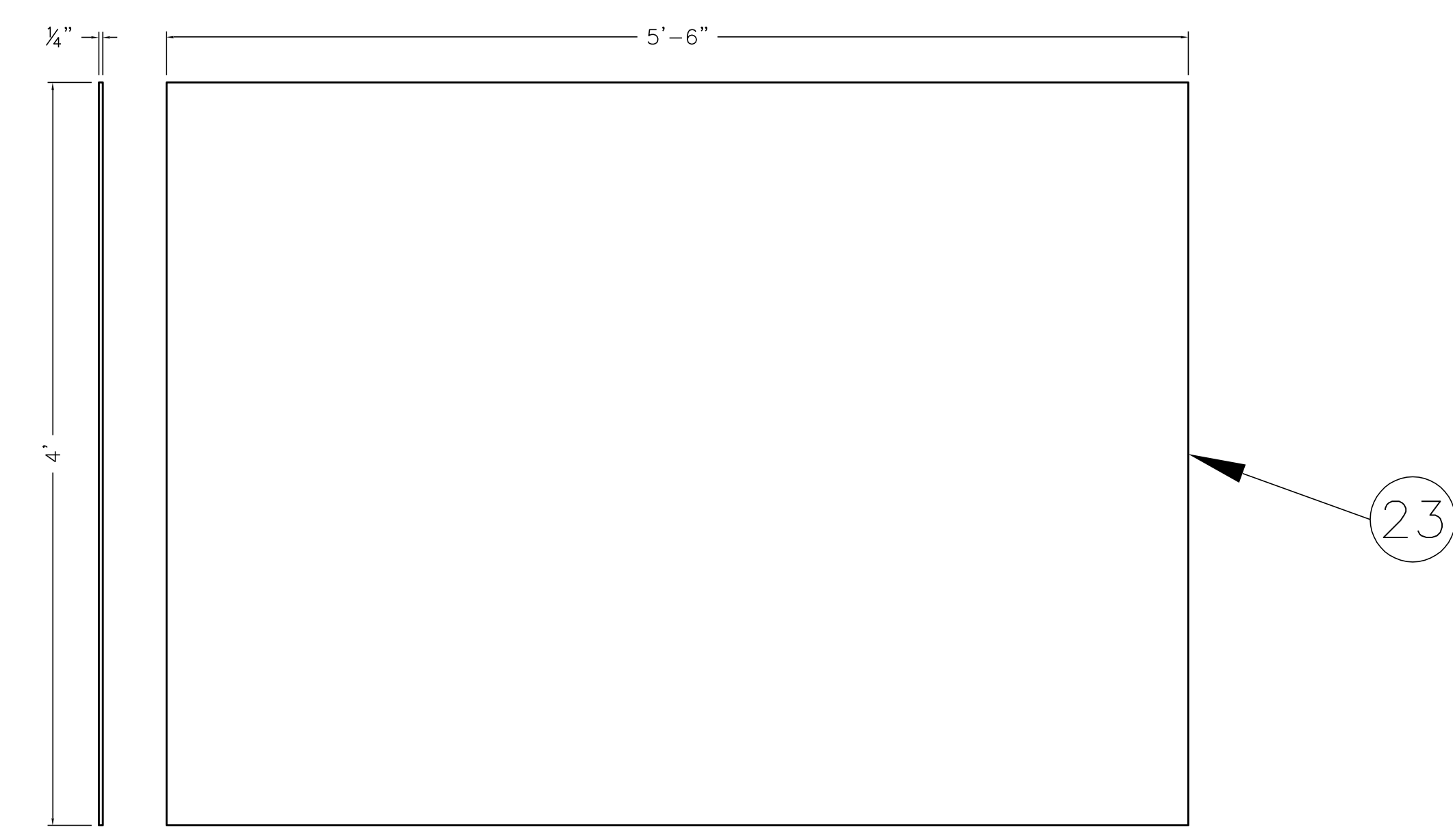
6



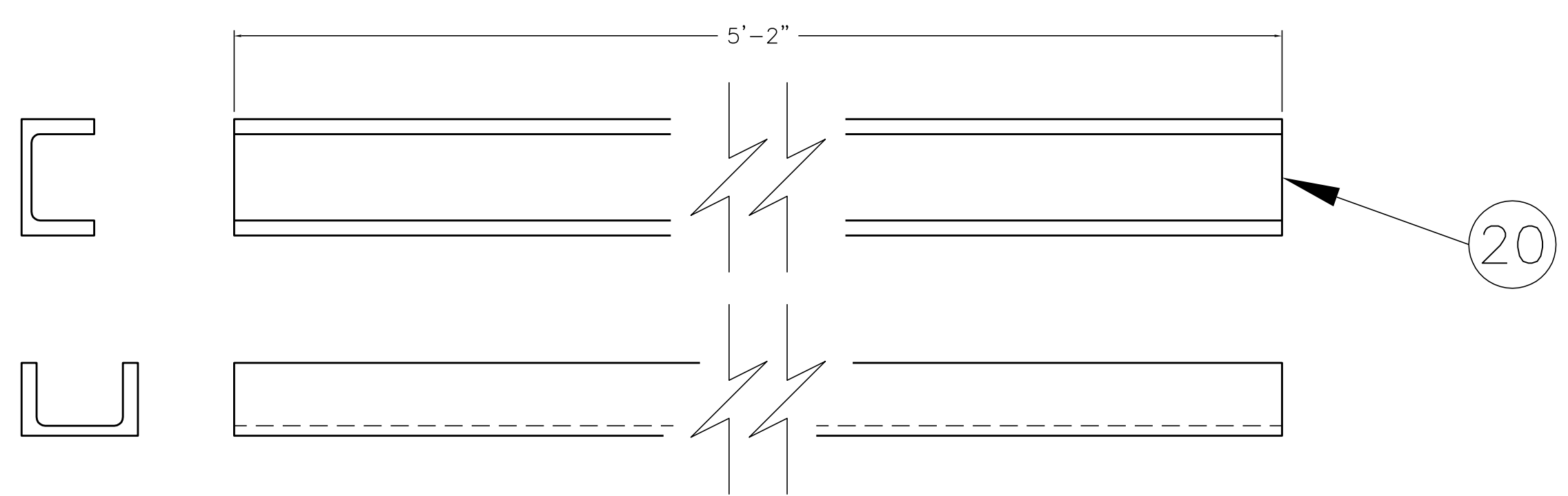
3



7



4



ZONE		REV	DESCRIPTION	DATE	APPROVED
REVISIONS					
ITEM	QTY.	DESCRIPTION		LENGTH	PART NO.
1	1	FRAME END		.	2F-401-1
2	1	FRAME SIDE		.	2F-401-2
3	1	FRAME, JOIST		.	2F-401-3
4	1	BOTTOM RAIL		.	2F-401-4
5	1	SUBFLOOR		.	2F-401-5
6	1	SIDE PLATE		.	2F-401-6
7	1	TOP PLATE		.	2F-401-7
20	AR	2"x1 1/4" 'U' 6063 ALUM. CHANNEL		.	-
21	AR	4'x8'x1/2" PLYWOOD		.	-
22	AR	1/2" POLYCARBONATE SHEET		.	-
23	AR	1/4" POLYCARBONATE SHEET		.	-

1 PER MARK-UPS		JR	1/5
REV.	FROM	BY	DATE
UNLESS OTHERWISE SPECIFIED			
TOLERANCE PERPENDICULAR WITHIN		TITLE	
INCHES	PARALLEL	2006 PLATFORM FABRICATION AND ASSEMBLY	
FRAC 1/32	FLAT OR STRAIGHT		
.001/32	CONCENTRIC T.I.R.		
.000/32	RADIUS 1/2	SURFACE FINISH	MATERIAL AS NOTED
.0000/32	HOLES 1/2	SCALE	CHECKED
.0000/32	FSCM	DATE	DATE
DRAWN BY		JRR	11/30/05
SCALE		NONE	
SIZE		D	No. 2F-401
SHEET NO.		1 of 4	

FIRST

200 Bedford Street, Manchester, N.H. 03101  
(603) 666-3906 • FAX (603) 666-3907

2006 PLATFORM  
FABRICATION AND ASSEMBLY

JRR 11/30/05 NONE

D No. 2F-401 1 of 4