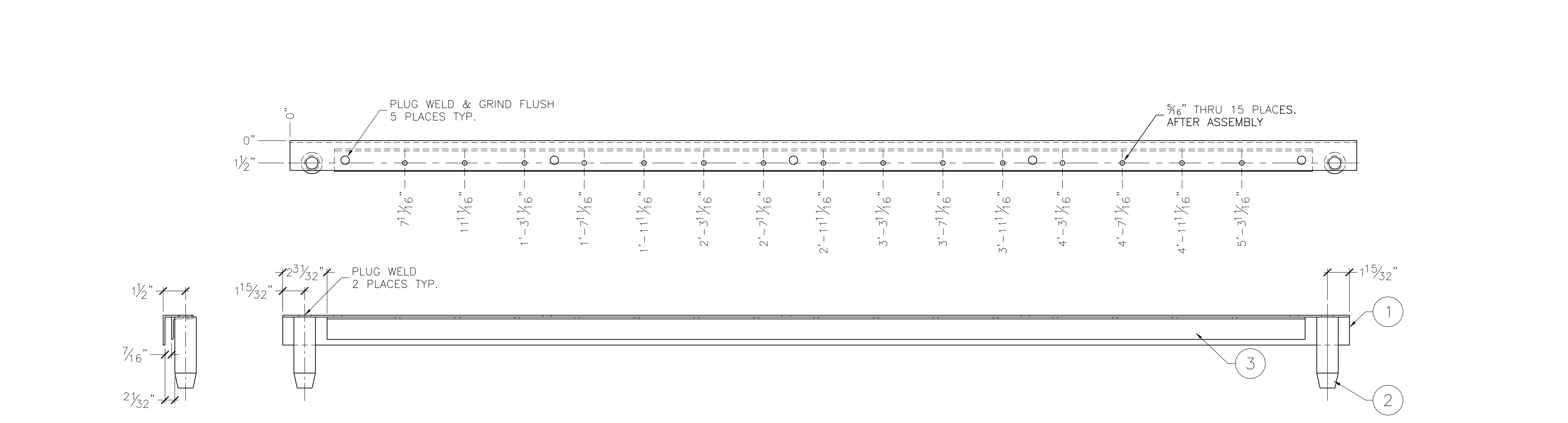
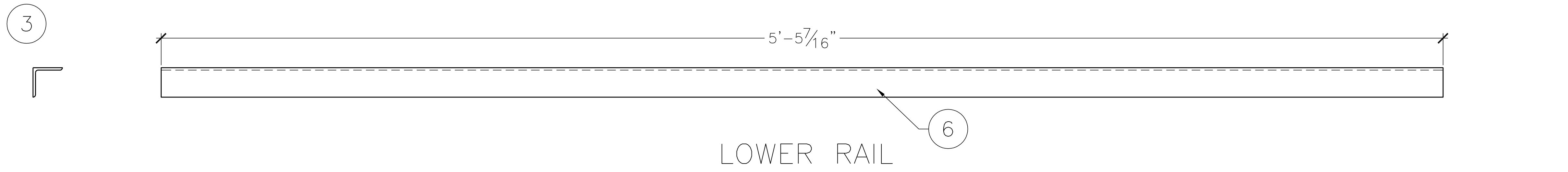


ITEM	QTY.	DESCRIPTION	LENGTH	PART NO.
1	1	UPPER RAIL	.	-
2	1	CONNECTING PIN	.	-
3	1	LOWER RAIL	.	-
4	AR	2"x2"x1/8" SQ CORNER 6063 ALUM ANGLE	.	-
5	AR	1 7/16" ALUM ROUND STOCK	.	-
6	AR	1 1/2"x1 1/2"x1/8" 6061 ALUM ANGLE	.	-



REV		FROM	BY	DATE	TITLE		MATERIAL	
UNLESS OTHERWISE SPECIFIED					FIELD TOP RAIL		AS NOTED	
TOLERANCE PERPENDICULAR WITHIN					FABRICATION AND ASSEMBLY		DATE	
INCHES PARALLEL					DRAWN BY		SCALE	
FRAC 1/32 FLAT OR STRAIGHT					JRR		02/07/05	
.00 1/2 .020 RADI . 1/2 SURFACE					CHECKED		DATE	
.000 1/2 .010 HOLES . 1/2 FINISH					SIZE		NONE	
.0000 1/2 .005 FSCM					D		No. F05-0011	
FIRST							SHEET NO. 1	
200 Bedford Street, Manchester, N.H. 03101							(603) 666-3906 ♦ FAX (603) 666-3907	