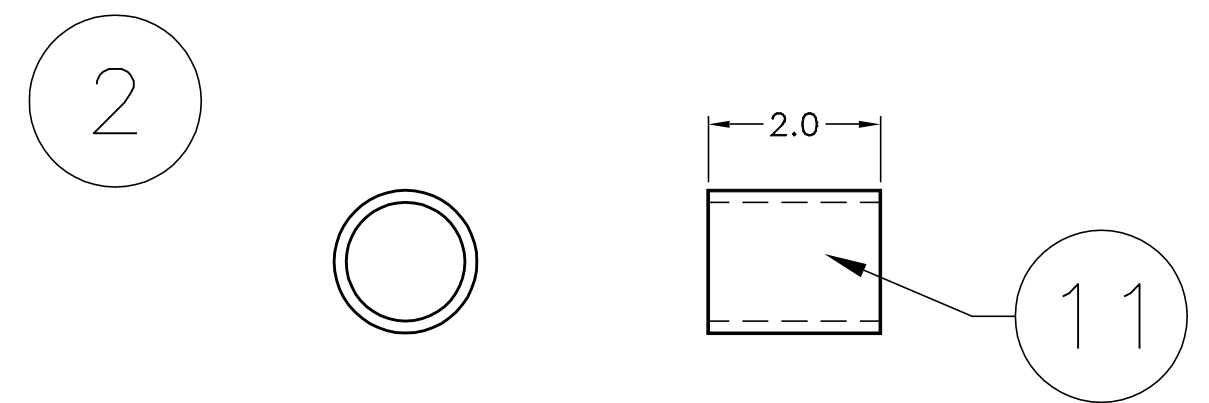
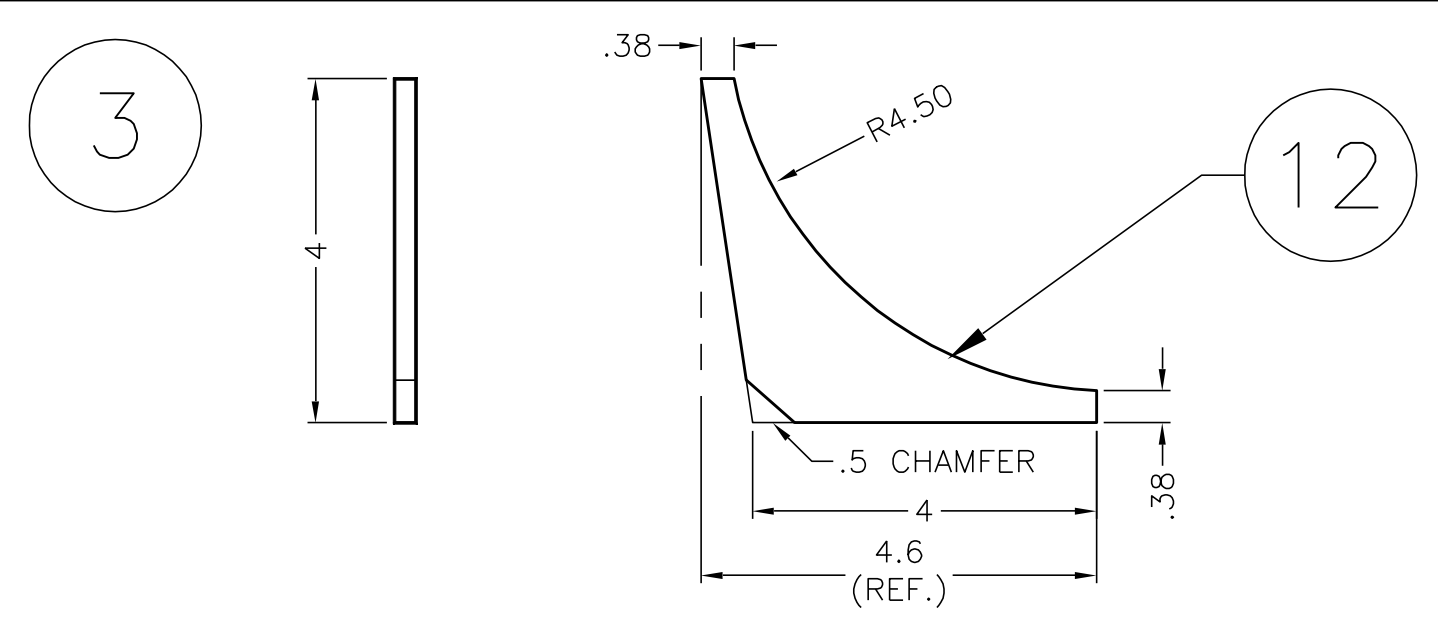


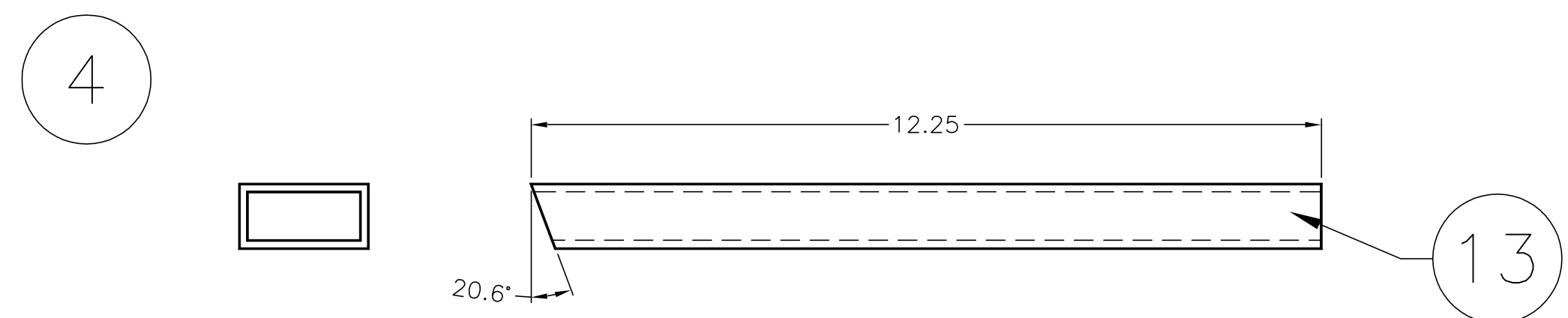
RAIL CRADLE



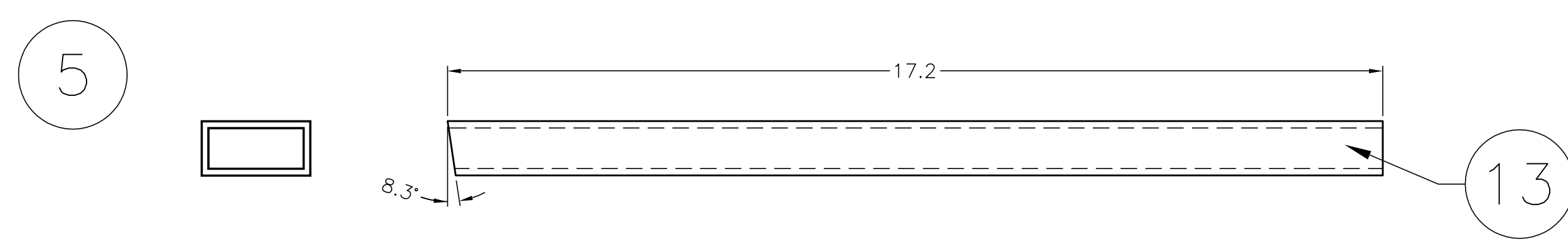
BOTTOM COUPLING



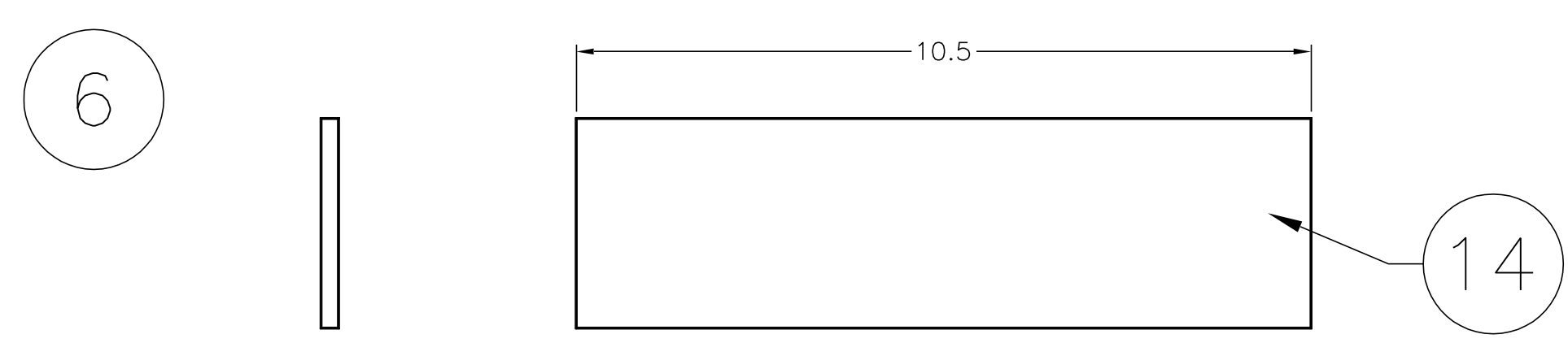
GUSSETT



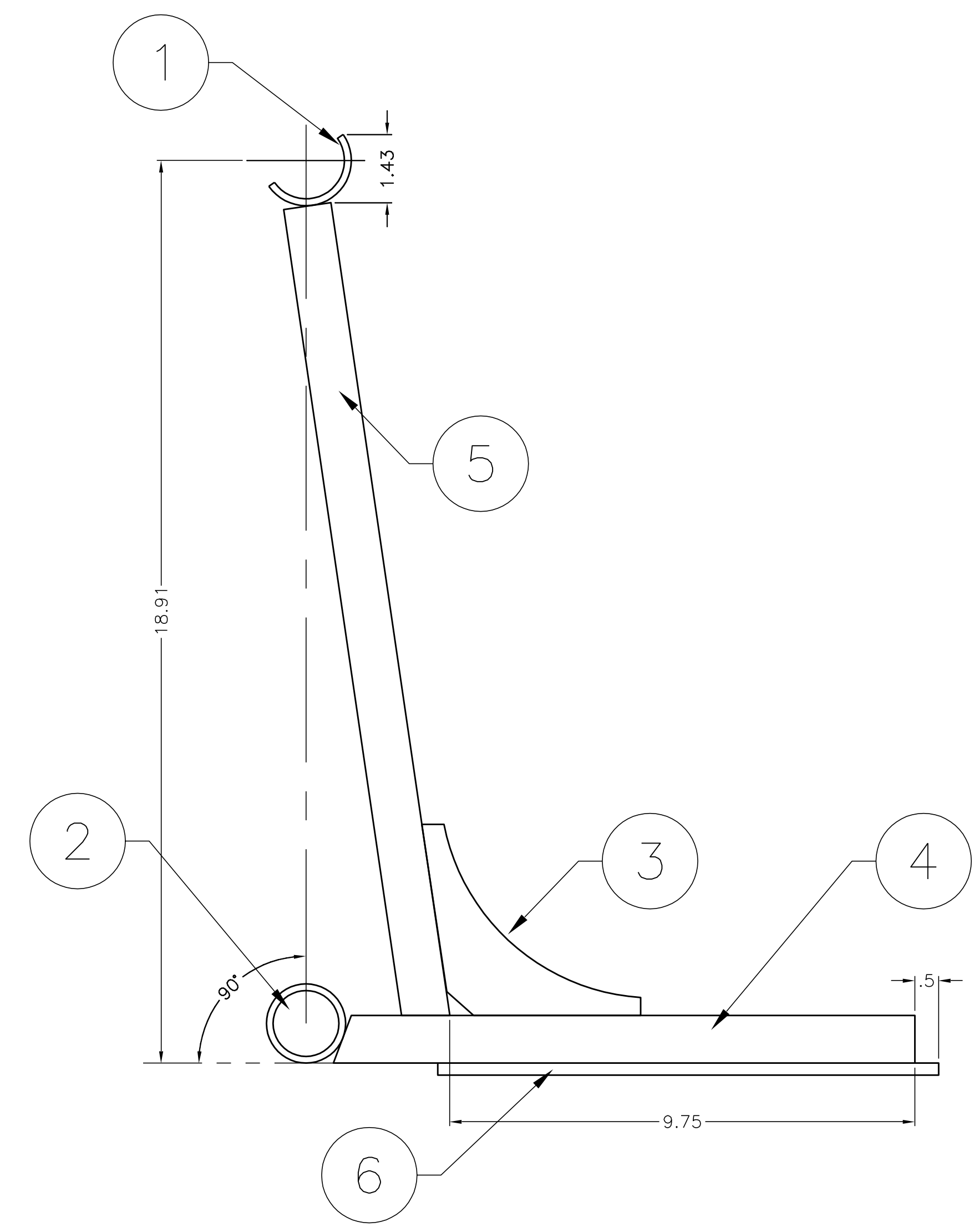
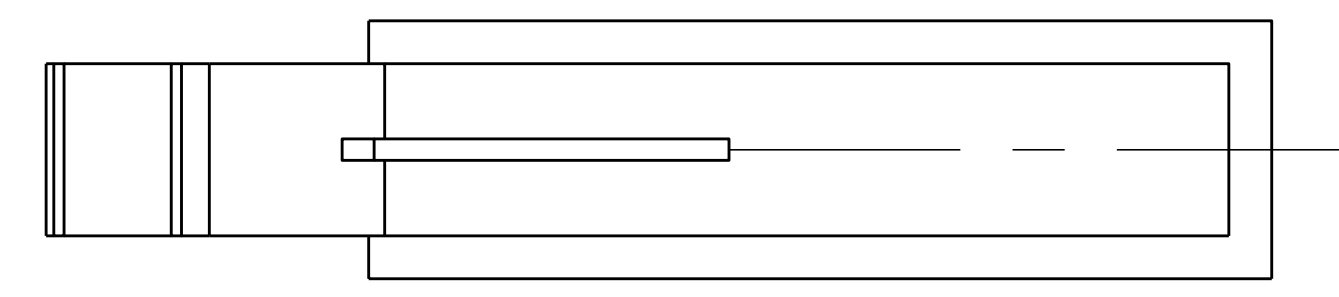
MOUNT



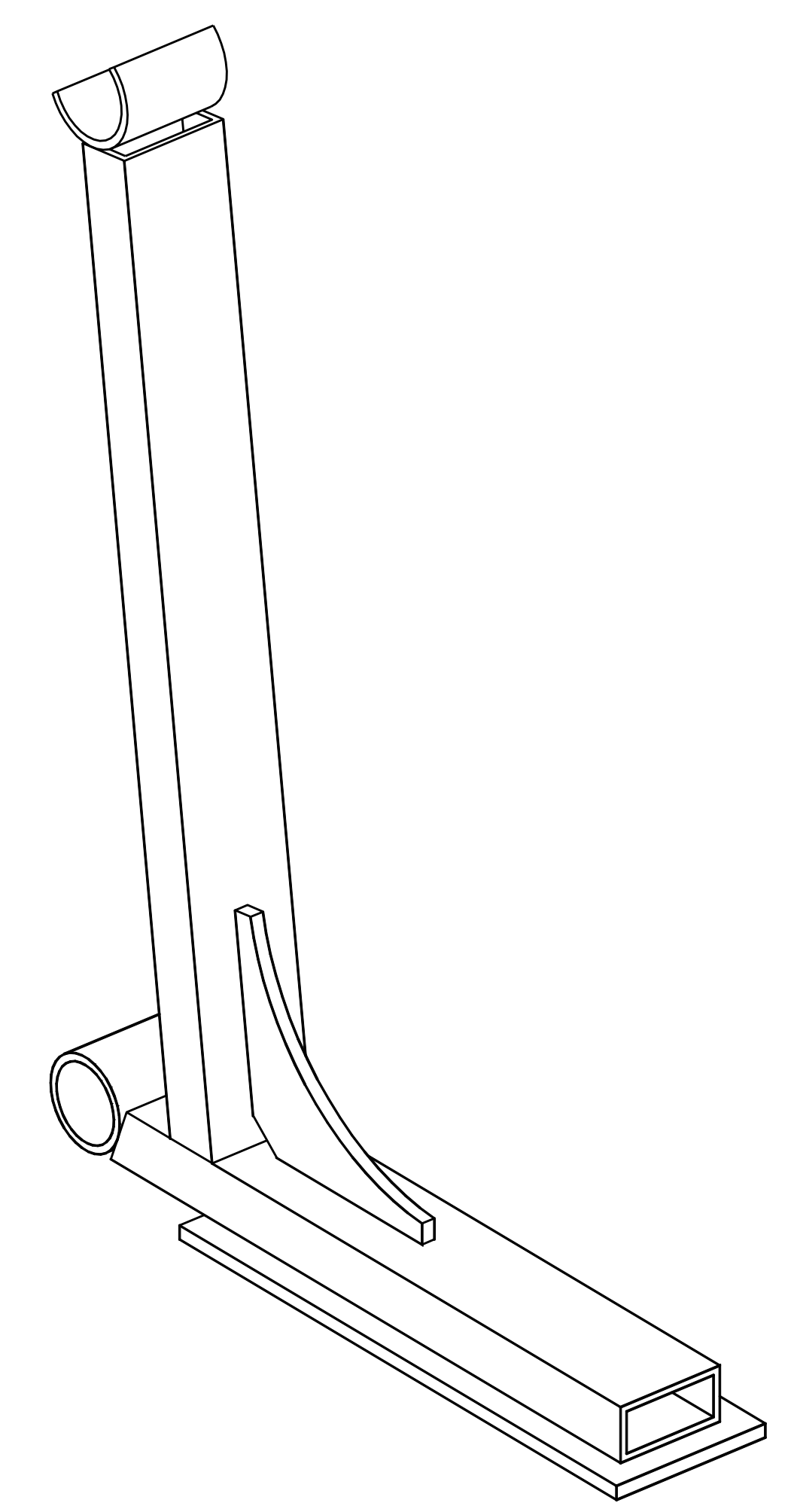
SUPPORT



BOTTOM PLATE



| ITEM | QTY. | DESCRIPTION | LENGTH | PART NO. |
|------|------|---------------------------------------|--------|----------|
| 1 | 1 | RAIL CRADLE | . | - |
| 2 | 1 | BOTTOM COUPLING | . | - |
| 3 | 1 | GUSSETT | . | - |
| 4 | 1 | MOUNT | . | - |
| 5 | 1 | SUPPORT | . | - |
| 6 | 1 | BOTTOM PLATE | . | - |
| . | . | . | . | - |
| . | . | . | . | - |
| 10 | AR | 1 1/4" SCH. 40 STR.PIPE 6061-16 ALUM. | . | - |
| 11 | AR | 1 1/2" SCH. 40 STR.PIPE 6061-16 ALUM. | . | - |
| 12 | AR | 4"x1/4" 6061 ALUMINUM PLATE | . | - |
| 13 | AR | 1"x2"x1/8" 6061-16 ALUM.TUBE. | . | - |
| 14 | AR | 3"x1/4" 6063 ALUMINUM PLATE | . | - |



NOTE:
REMOVE ALL SHARP EDGES.

| | | | | | |
|----------------------------|----------------------|--------------------------|----------|--------------|-------------|
| UNLESS OTHERWISE SPECIFIED | | TITLE | | MATERIAL | |
| TOLERANCE | PERPENDICULAR WITHIN | OUTRIGGER | | AS NOTED | |
| INCHES | PARALLEL | FABRICATION AND ASSEMBLY | | | |
| FRAC 1/64 | FLAT OR STRAIGHT | DRAWN BY | DATE | SCALE | CHECKED |
| .00 | CONCENTRIC T.I.R. | JRR | 01/14/05 | NONE | |
| .000 | RADII 1/4 | SIZE | D | No. F05-0013 | SHEET NO. 1 |
| .0000 | HOLES 1/4 | | | | |
| | FSCM | | | | |

FIRST
200 Bedford Street, Manchester, N.H. 03101
(603) 666-3906 ♦ FAX (603) 666-3907