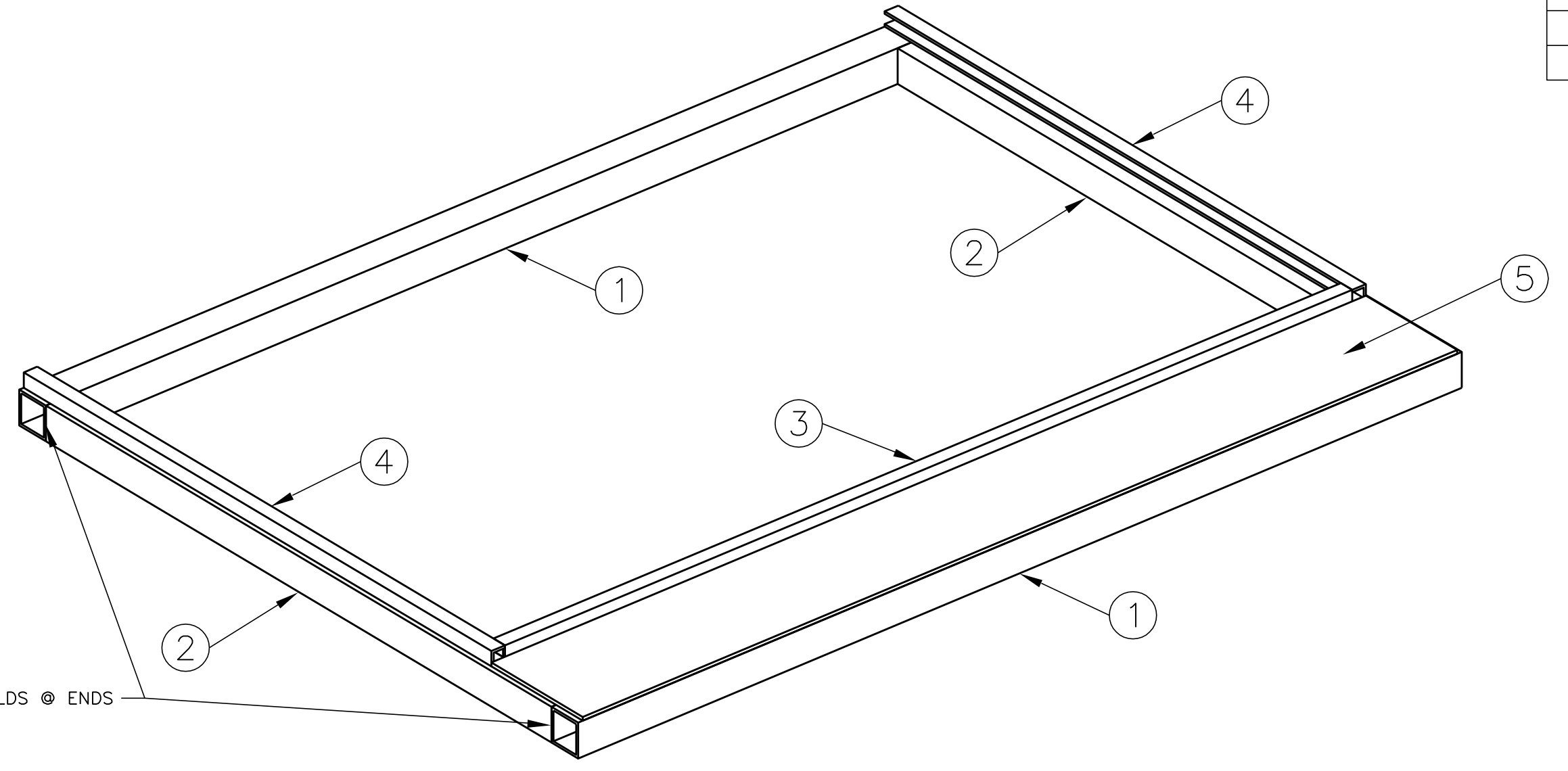
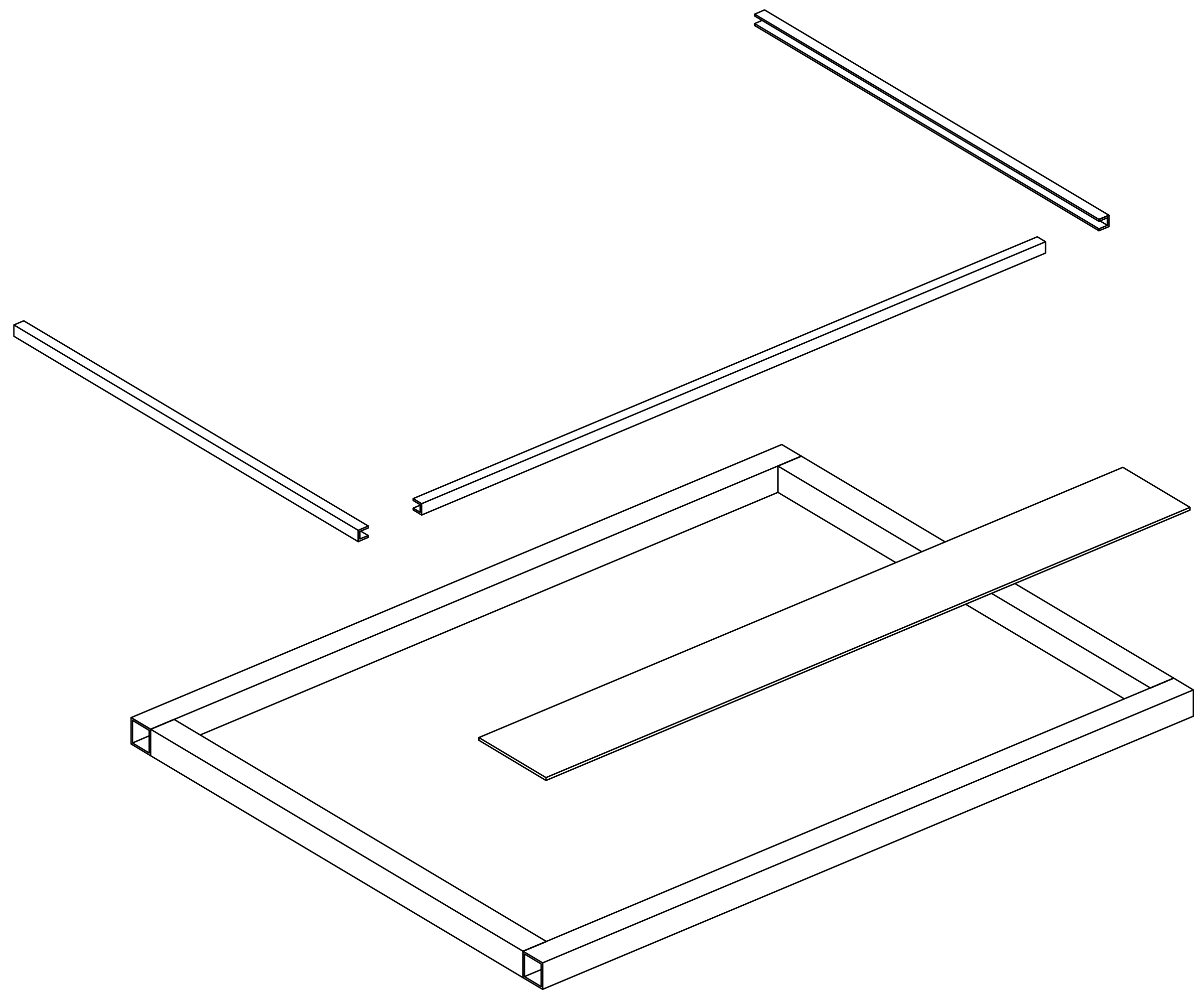
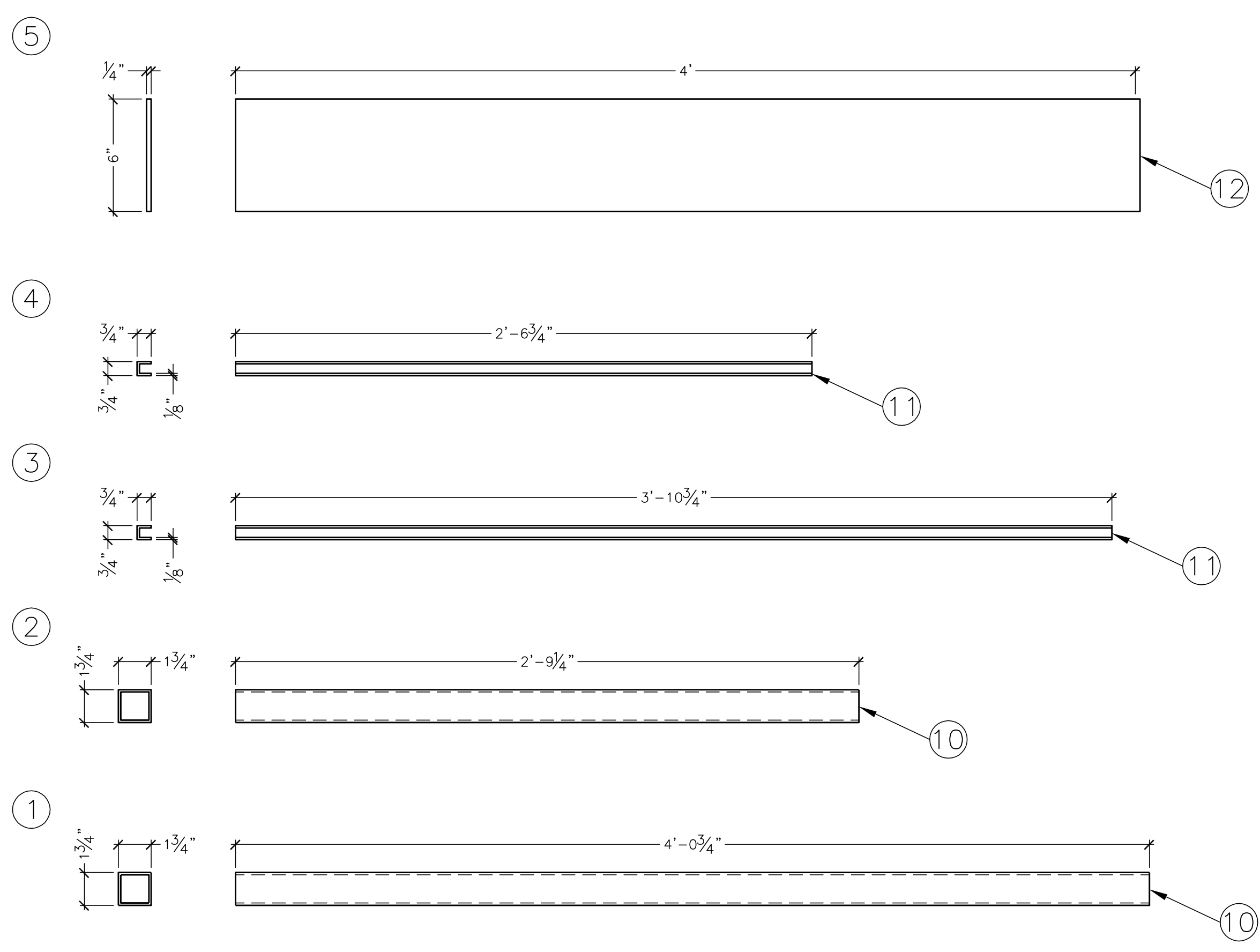
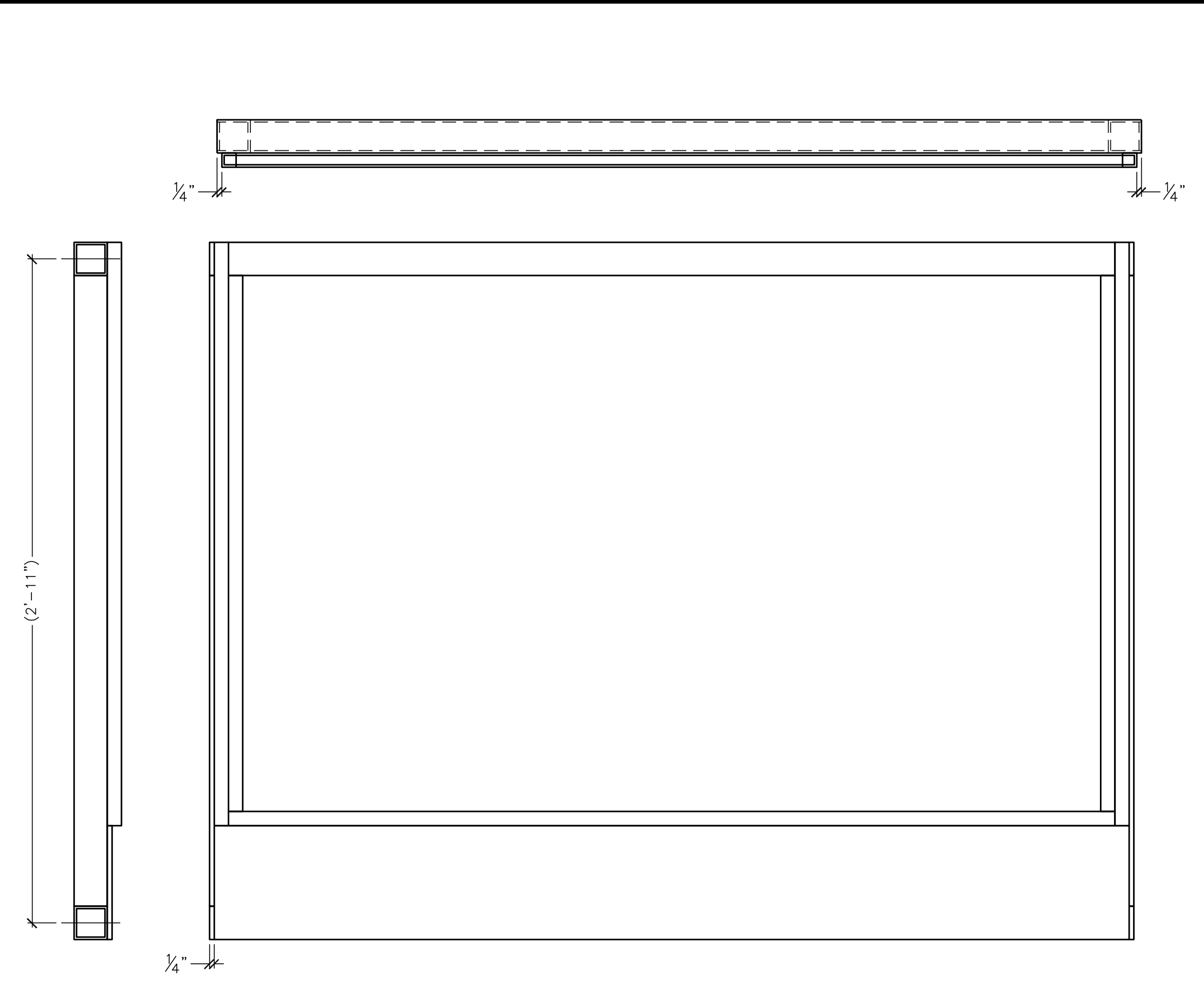


REVISIONS				
ZONE	REV	DESCRIPTION	DATE	APPROVED

ITEM	QTY.	DESCRIPTION	LENGTH	PART NO.
1	2	TOP / BOTTOM RAIL	.	2F-100-01
2	2	SIDE RAIL	.	2F-100-02
3	1	BOTTOM CHANNEL	.	2F-100-03
4	2	SIDE CHANNEL	.	2F-100-04
5	1	FRONT PLATE	.	2F-100-05
.	.	.	.	-
10	AR	1 3/4" x 1 3/4" x 3/8" 6061 ALUMINUM TUBING	.	-
11	AR	3/4" x 3/4" x 3/8" ALUMINUM 'U' CHANNEL	.	-
12	AR	3/4" 6061 ALUMINUM PLATE	.	-
.	.	.	.	-
.	.	.	.	-
.	.	.	.	-



NO WELDS @ ENDS



NOTE:
REMOVE ALL SHARP EDGES.

1		PER MARK-UPS	JR	1/5	TITLE		2006 PLAYER'S STATION FABRICATION & ASSY		MATERIAL AS NOTED
REV.	FROM	BY	DATE	DRAWN BY		DATE	SCALE	CHECKED	DATE
UNLESS OTHERWISE SPECIFIED		TOLERANCE		PERPENDICULAR WITHIN		TITLE		MATERIAL AS NOTED	
INCHES		FRAC. 1/32		HOLDING		DRAWN BY		DATE	
.0000		.0000		.0000		JRR		11/21/05	
.0000		.0000		.0000		SCALE		NA	
.0000		.0000		.0000		CHECKED		DATE	
.0000		.0000		.0000		SIZE		D	
.0000		.0000		.0000		No.		2F-100	
.0000		.0000		.0000		SHEET NO.		1 of 3	

FIRST

200 Bedford Street, Manchester, N.H. 03101
(603) 666-3906 • FAX (603) 666-3907