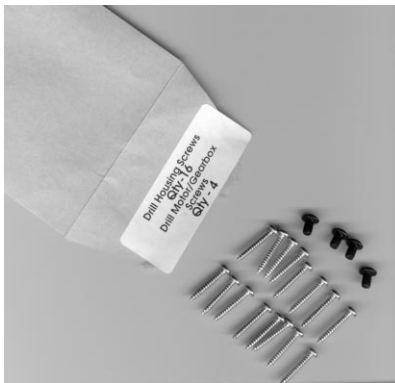


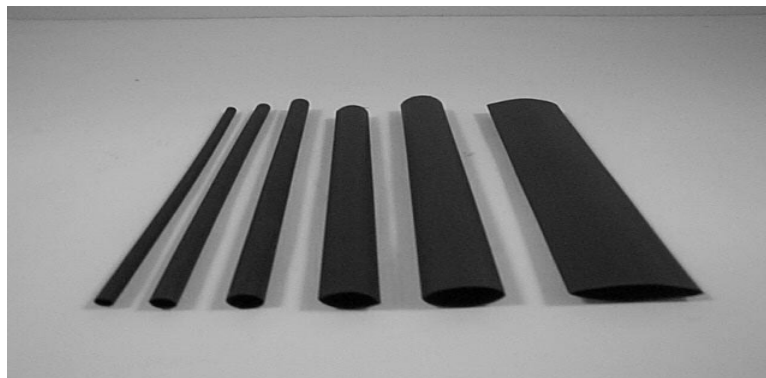
**MISCELLANEOUS BAG**



**Picture 1: 5 Minute Epoxy Gel (1)**



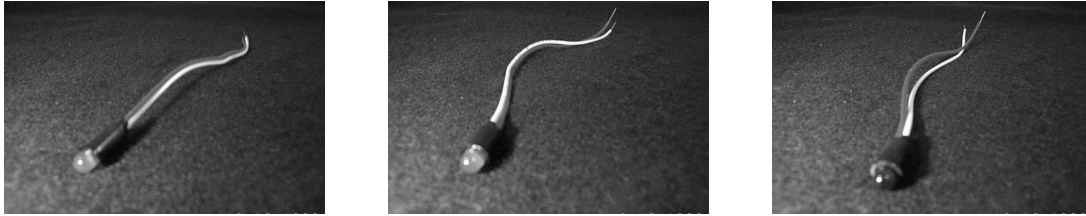
**Picture 2: Drill Housing Screws (16), Drill Motor/Gearbox Screws (4)**



**Picture 3: Heat Shrink Tubing (1/8"φ, 3/16"φ, 1/4"φ, 3/8"φ, 1/2"φ, 3/4"φ) (1 of each)**



**Picture 4: Lead Screw 3.5" (1), Lead Screw 8" (1) Lead Screw Nut (2)**



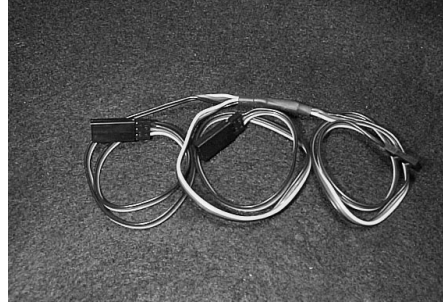
**Picture 5: Panel Mount LED (amber (2), green (4), red (1))**



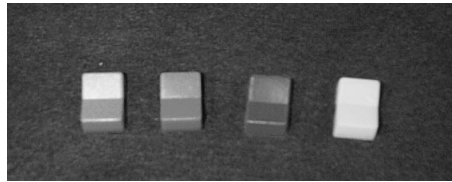
**Picture 5: Potentiometer (2)**



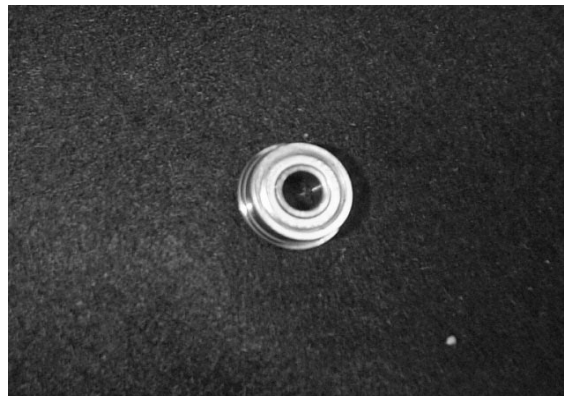
**Picture 6: PWM/Relay Cable (8)**



**Picture 7: PWM/Relay Y Cable (2)**



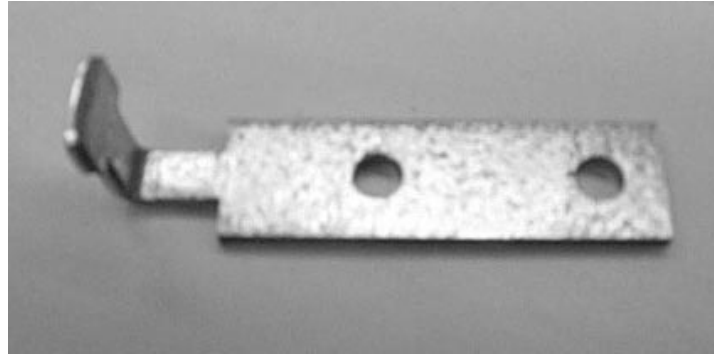
**Picture 8: Rocker Switch Cover (blue, green, red, yellow) (1 of each)**



**Picture 9: Single Row Radial Flanged Ball Bearing, 1/4 in. I.D. (4)**



**Picture 10: 12-10 AWG Yellow Spade Connector (Female, Male) (5 of each)**



**Picture 11: Torque Motor Anti-Rotation Bracket (1)**