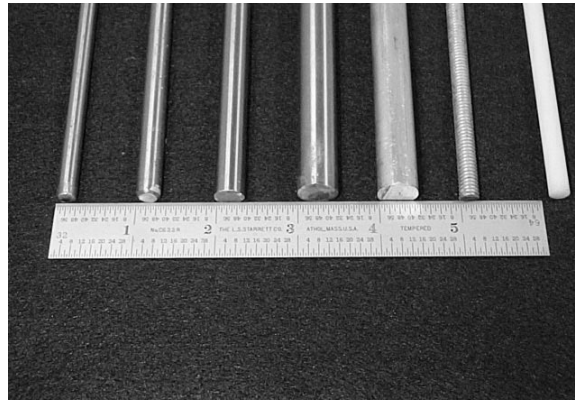
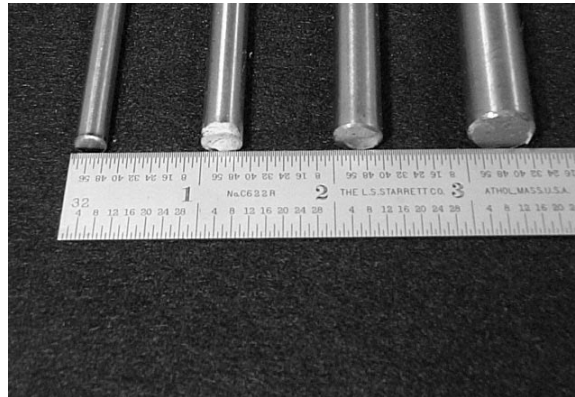


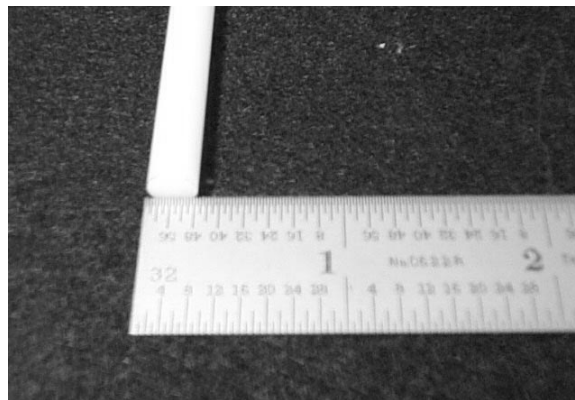
MAILING TUBE



Picture 1: (Left to right) Drill Rods ($5/16''\phi$, $3/8''\phi$, $1/4''\phi$, $1/2''\phi$), Aluminum Rod ($1/2''\phi$), Threaded Rod ($1/4''\phi$), and Delrin (Acetal) Rod ($1/4''\phi$)



Picture 2: (Left to right) Drill Rods ($5/16''\phi$, $3/8''\phi$, $1/4''\phi$, $1/2''\phi$)



Picture 3: Delrin (Acetal) Rod ($1/4''\phi$)